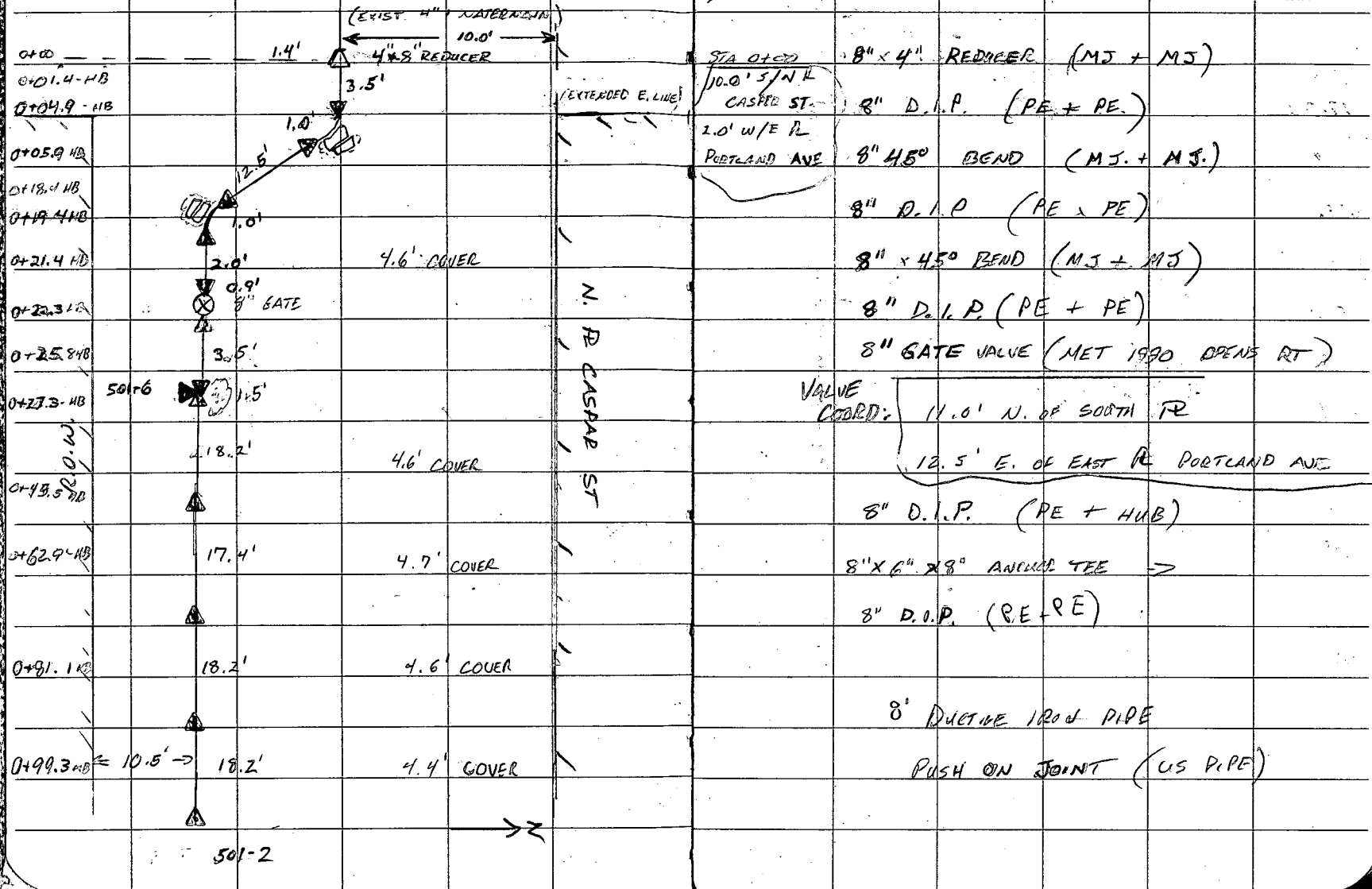


STREET CASPER ST.  
 LOCATION CASPER ST AT PORTLAND AVE.  
 DESCRIPTION NEW 8" WATERMAIN HYDRANT

DOMESTIC ✓  
 HOLLY MAIN 8"  
 SERVICE \_\_\_\_\_  
 HYDRANT \_\_\_\_\_

CONTRACTOR GORDON PHILLIPS F.B. # 501-1  
 INSPECTOR KEN LINDSAY DATE 5/28/91  
 RECORDER KEN LINDSAY MISC. \_\_\_\_\_  
 POSTED 40 2m 400 2m G. B. SM H.B. AV.R. NS



501-2

STREET CASPAR ST.

DOMESTIC ✓  
HOLLY  
MAIN 8"

LOCATION EAST OF PORTLAND AVE SERVICE

DESCRIPTION NEW 8" WATERMAIN

HYDRANT

CONTRACTOR GOLDEN PHILLIPS

F. B. # 501-2 ✓

INSPECTOR KEN LINDSAY

DATE 5/28/91

RECORDER KEN LINDSAY MISC.

POSTED 40' 400' G. B.

H.B. V.R.

0+99.3-HB

18.2' 4.3' COVER

1+17.5-HB

18.2' 4.3' COVER

1+35.7-HB

SOUTH 1/2 CASPAR ST

10.5'

17.7' 4.6' COVER

1+53.4-HB

17.5' 4.8' COVER

1+70.9-HB

18.2' 5.6' COVER

1+89.1-HB  
R  
ZIMMER ST

10.5'

CB LATERAL

2+00.9-HB

11.8'

2+02.5-HB

501-H

1.6'

5.5' COVER

2+08.5-HB

6.0'

END 5/28/91

501-3

→ Z

8" DUCTILE  
IRON  
PIPE

(U.S. PIPE)

PUSH-ON

JOINT

8" D.I.P. (PE + PE)

8" x 8" x 8" TEE (ZIMMER ST.)

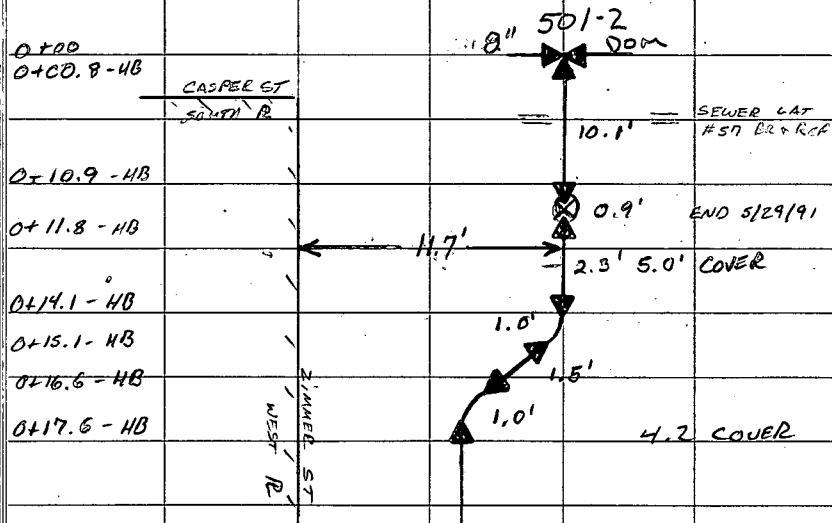
8" D.I.P. (PE + HUB)



STREET ZIMMER ST  
 LOCATION NORTH OF CASPER ST  
 DESCRIPTION 8" WATER MAIN

DOMESTIC ✓  
 HOLLY \_\_\_\_\_  
 MAIN 8" \_\_\_\_\_  
 SERVICE \_\_\_\_\_  
 HYDRANT \_\_\_\_\_

CONTRACTOR GOLDEN PHILLIPS F.B. # 5014 ✓  
 INSPECTOR KEN LINDSAY DATES 5/29/91  
 RECORDER KEN LINDSAY MISC. \_\_\_\_\_  
 POSTED 40' 5M 400 5M G. B. 5M H.B. V.R.



8" x 8" x 8" TEE

8" D.I.P. (P.E. + P.E.)

8" RATE VALVE (NET 1990 - OPENS RT.)

VALVE COORD. 2.0'S/S R CASPER ST

11.7' E/W R ZIMMER ST

8" D.I.P. (P.E. + P.E.)

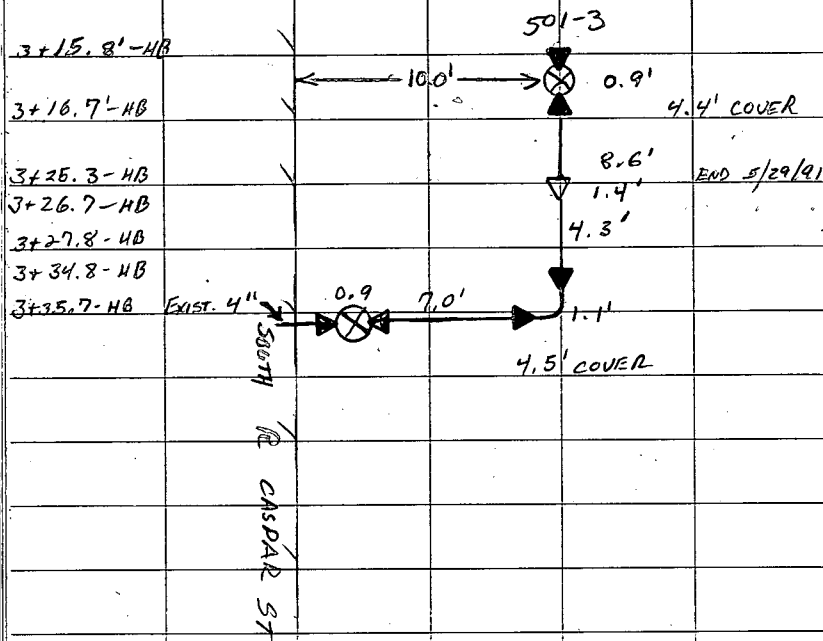
8" x 45° BEND (M.J. + M.J.)

8" D.I.P. (P.E. + P.E.)

8" x 45° BEND (M.J. + M.J.)

EXIST. 8" D.I.P.

STREET CASPER ST. DOMESTIC   
 LOCATION EAST OF ZIMMER ST. HOLLY MAIN 8"  
 DESCRIPTION NEW 8" WATERMAIN SERVICE \_\_\_\_\_  
 HYDRANT \_\_\_\_\_



CONTRACTOR GORDON PHILLIPS F. B. # 501.5  
 INSPECTOR KEN LINDSAY DATE 5/29/91  
 RECORDER KEN LINDSAY MISC. \_\_\_\_\_  
 POSTED 40 SM 400 SM G. B. SM H.B. SM V.R. \_\_\_\_\_

8" GATE VALVE (MET. 1990 OPENS RT.)

VALUE COND / 92.4' E/E R ZIMMER ST.  
 10.0' N/S R CASPER ST

8" D.I.P. (P.E. + P.E.)

8" x 4" REDUCER (M.J. + M.J.)

4" D.I.P. (PE + PE)

4" 90° BEND (M.J. + M.J.)

4" D.I.P. (PE + PE)

4" GATE VALVE (MET OPENS RT)

STREET CASPER ST.

LOCATION EAST OF PORTLAND

DESCRIPTION NEW HYDRANT

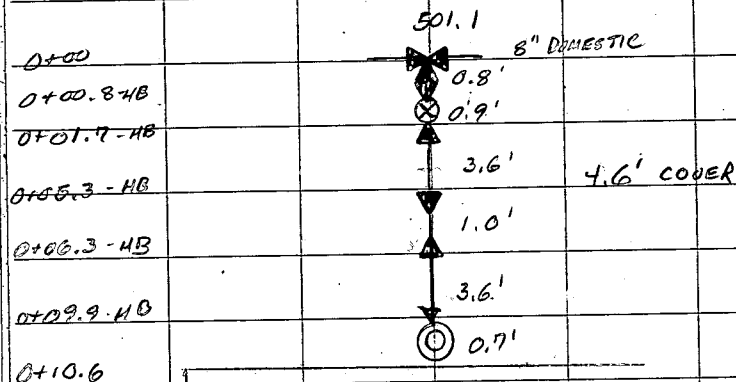
DOMESTIC \_\_\_\_\_  
HOLLY \_\_\_\_\_  
MAIN \_\_\_\_\_  
SERVICE \_\_\_\_\_  
HYDRANT

CONTRACTOR GORDON PACCIRS F. B. # 501-6 ✓

INSPECTOR KEN LINDSAY DATE 5/29/91

RECORDER KEN LINDSAY MISC. \_\_\_\_\_

POSTED 40 GM 400 GM G. B. GM H.B. GM V.R. \_\_\_\_\_



8" X 6" X 8" ANCHOR TEE  
 9.8' N OF HYD  
 6" GATE VALVE (1990 MET OPEN RT)  
 6" ANCHOR PIPE  
 6" SOLID SLEEVE  
 6" ANCHOR PIPE  
 5 1/4" 2N - (U.S. PIPE 1991)

S R CASPER

HYD. COORD / 0.5' N/S R CASPER  
 17.3 E/E R PORTLAND AVE

ER  
Portland



STREET CASPER ST.

LOCATION E. OF ZIMMER ST

DESCRIPTION NEW HYDRANT

DOMESTIC \_\_\_\_\_

HOLLY \_\_\_\_\_

MAIN \_\_\_\_\_

SERVICE \_\_\_\_\_

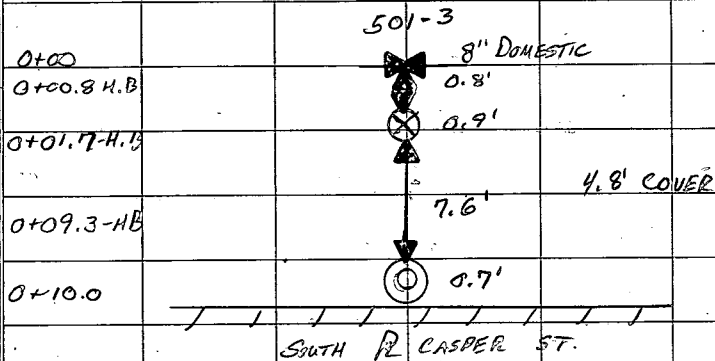
HYDRANT

CONTRACTOR GORDON PHILLIPS F. B. #501-7 ✓

INSPECTOR KEN LINDSAY DATE 5/29/91

RECORDER KEN LINDSAY MISC.

POSTED 40 SM 400 SM G. B. SM I. B. SM V. R. N



8" x 6" x 8" ANCHOR TEE

6" RATE VALVE (1990 MET. OPEN RT.)

Hyd

VALVE COORD 8.7' N. OF HYD.

6" ANCHOR PIPE

5 1/4" 2 N (US PIPE 1991)

HYD. COORD. 0.2' N/S R CASPER ST.

61.8' E/E R ZIMMER ST.

STREET IRONDEQUOIT ST

LOCATION EAST OF PORTLAND AV

DESCRIPTION NEW HYDRANT

DOMESTIC \_\_\_\_\_

WELLY \_\_\_\_\_

MAIN \_\_\_\_\_

SERVICE \_\_\_\_\_

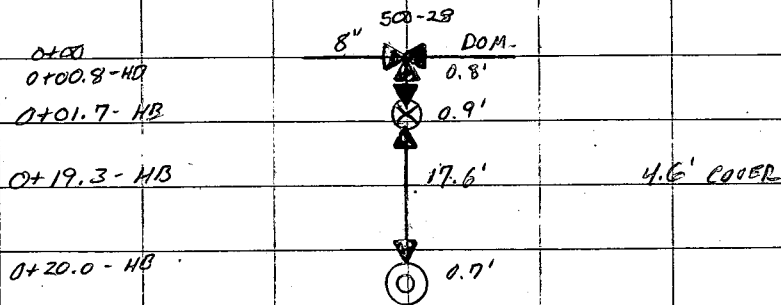
HYDRANT ✓

CONTRACTOR GORDON PHILLIPS F. B. #501-8 ✓

INSPECTOR KEN LINDSEY DATE 5/30/91

RECORDER KEN LINDSEY MISC. \_\_\_\_\_

POSTED 40 GM 400 GM G. B. GM H.B. GM V.R. GM



IRONDEQUOIT ST

N  
N

8" x 6" x 8" ANCHOR TEE

6" GATE VALVE (MET OPENS RT)

HYD VALVE COORD. 18.4' S. OF HYD.

6" ANCHOR PIPE

5 1/4" 2N (US PIPE 1996)

HYD COORD 6.5' S/N R IRONDEQUOIT  
351.5 E/E R PORTLAND AVE

STREET IRONDEQUOIT ST

LOCATION EAST OF PORTLAND AVE

DESCRIPTION NEW HYDRANT

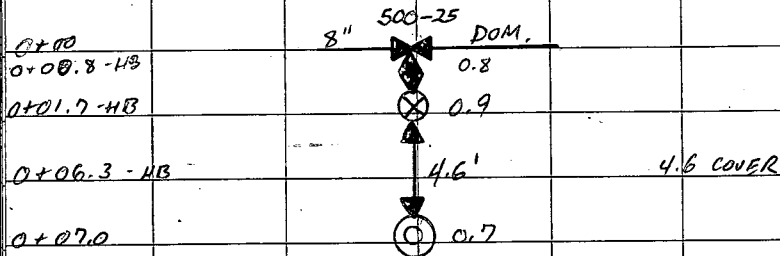
DOMESTIC \_\_\_\_\_  
HULLY \_\_\_\_\_  
MAIN \_\_\_\_\_  
SERVICE \_\_\_\_\_  
HYDRANT ✓

CONTRACTOR GORDON PHILLIPS F.B. # 501-9 ✓

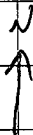
INSPECTOR KEN LINDSAY DATE 5/30/91

RECORDER KEN LINDSAY MISC.

POSTED 40 GM 400 GM G. B. GM H.B. GM V.R.



SOUTH R IRONDEQUOIT



8" x 6" x 8" ANCHOR TEE

6" GATE VALVE (MET OPENS RT)

HYD. VALUE COORD. 5.9' N. OF HYD

6" ANCHOR PIPE

5 1/4" 2N (US PIPE 1991)

HYD COORD. 5.5' N/S R IRONDEQUOIT  
76.5' E/E R PORTLAND AVE.

STREET ELIZABETH PL

LOCATION N / IRONDEQUOTT ST

DESCRIPTION NEW 8" W.M.

DOMESTIC ✓

HOLLY

MAIN

SERVICE

HYDRANT

✓

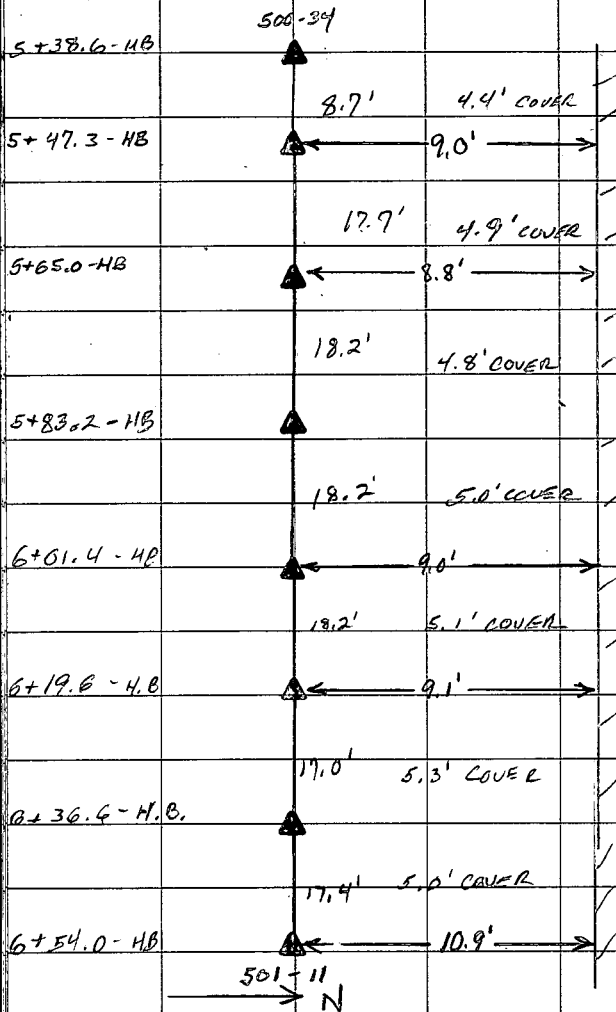
8"

CONTRACTOR GORDON PHILLIPS F. B. # 501-10 ✓

INSPECTOR KEN LINDSAY DATE 5-31-91

RECORDER KEN LINDSAY MISC.

POSTED 40 \$1400 G. B. H. B. V. R.



8" DUCTILE

IRON

PIPE

PUSH-ON JOINT (U.S. PIPE)

N R ELIZABETH PL

CONTRACTOR GORDON PHILLIPS F.B. # 501-11

INSPECTOR KEN LINDSAY DATE 5-31-91

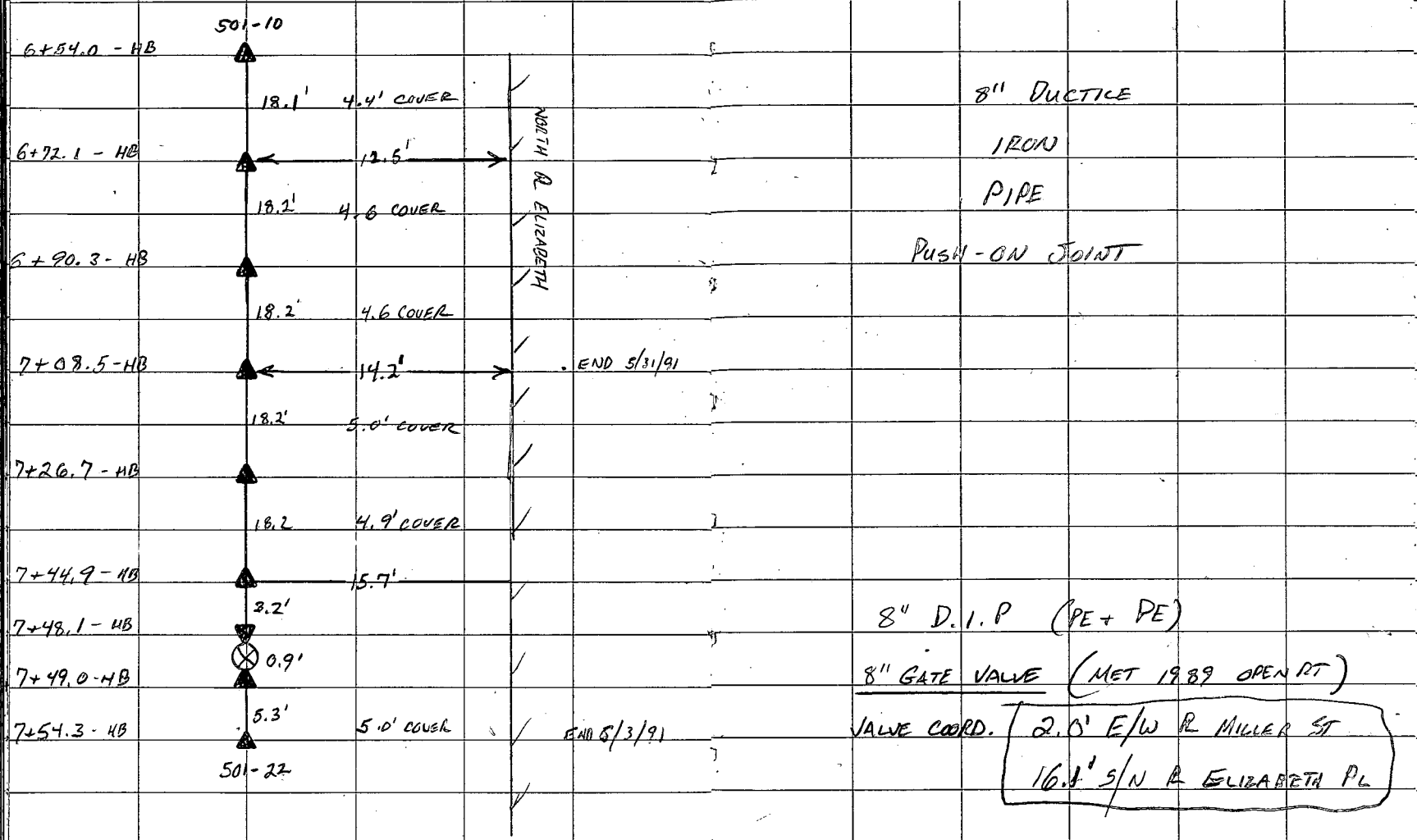
RECORDER KEN LINDSAY MISC. \_\_\_\_\_

POSTED 40 GM 400 GM G.B. GM H.B. V.R.

STREET ELIZABETH PL. DOMESTIC ✓

LOCATION WEST OF MILLER ST. SERVICE \_\_\_\_\_  
MANHOLE 8"

DESCRIPTION NEW 8" W.M. HYDRANT \_\_\_\_\_



CONTRACTOR GORDIN PHILLIPS F. B. # 501-12

INSPECTOR KEN LINDSAY DATE 6-3-91

RECORDER KEN LINDSAY MISC. \_\_\_\_\_

POSTED 40 SM 400 SM G. B. H.B. ~ V.R. ~

STREET LOCHNER PL

DOMESTIC

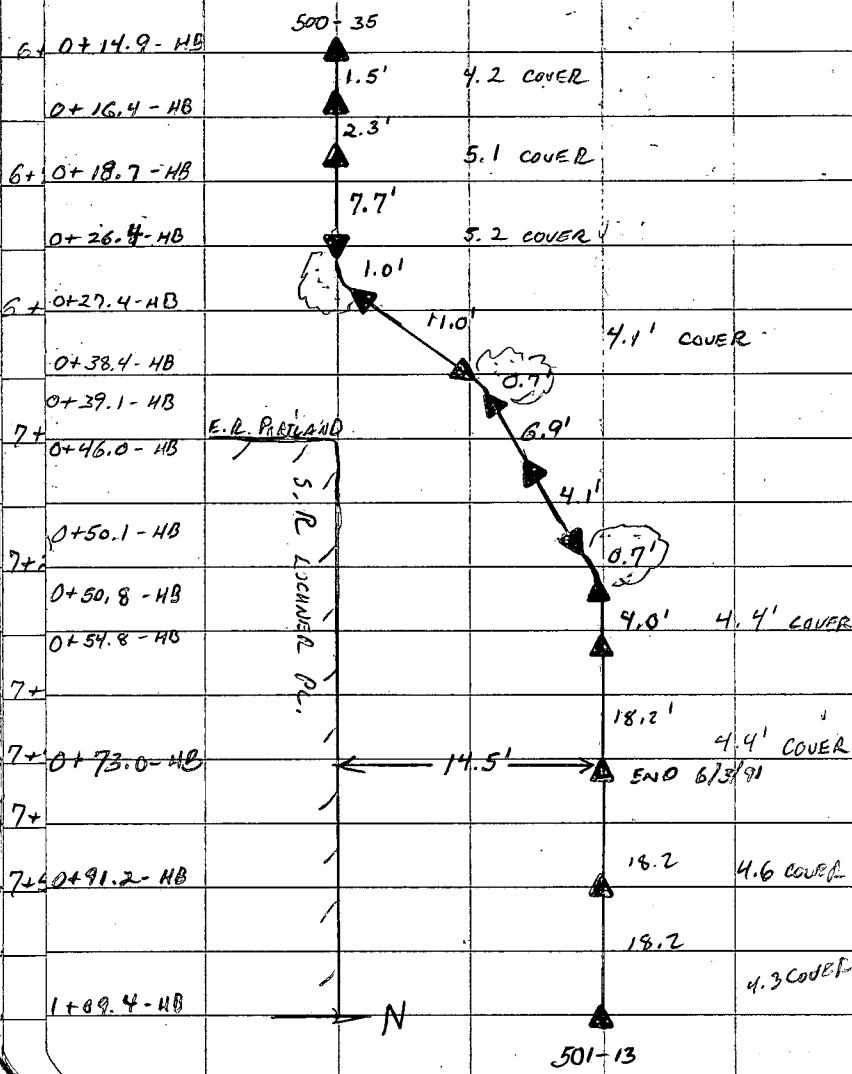
HOLLY \_\_\_\_\_

MAIN 8"

SERVICE \_\_\_\_\_

LOCATION AT PORTLAND AVE

DESCRIPTION NEW 8" WATER MAIN HYDRANT



12" x 8" offset depth 2.7  
 8" D.I.P. (P.E. + P.E.)  
 12" x 8" OFFSET (M.J. + M.J.) DOWNWARD  
 8" D.I.P. (P.E. + P.E.)  
 45° BEND (M.J. + M.J.)  
 8" D.I.P. (P.E. + P.E.)  
 22 1/2° BEND (M.J. + M.J.)  
 8" D.I.P. (P.E. + HUB)  
 8" D.I.P. (P.E. + P.E.)  
 22 1/2° BEND (M.J. + M.J.)  
 8" D.I.P. (P.E. + HUB)  
 8" DUCTILE  
 IRON  
 PIPE  
 PUSH ON JOINT

501-13

STREET LOCHNER PL

LOCATION EAST OF PORTLAND AVE

DESCRIPTION NEW 8" WATER MAIN

DOMESTIC ✓  
WELLY  
MAIN 8"  
SERVICE

HYDRANT

CONTRACTOR GORDON PHILLIPS

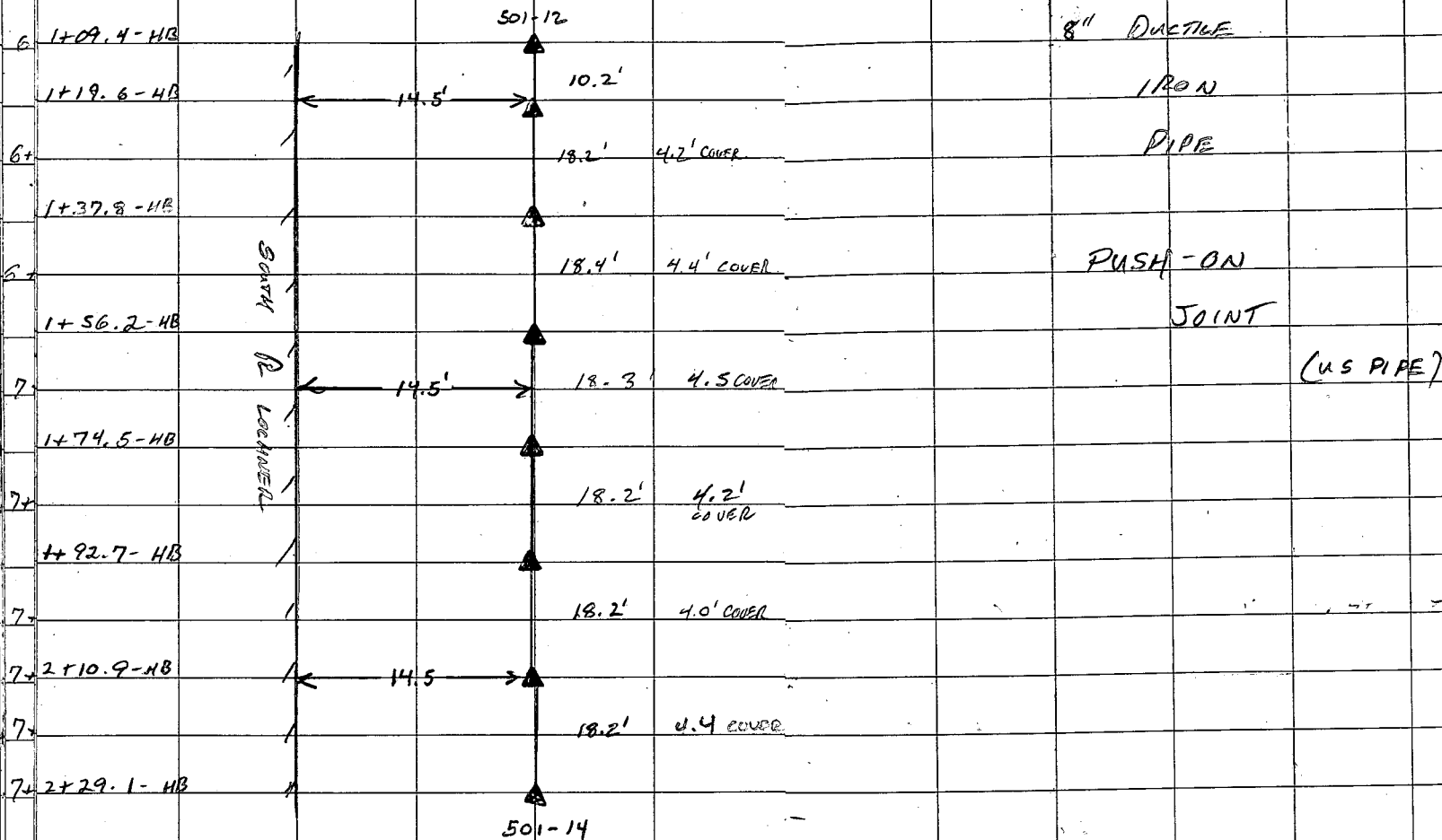
F. B. # 501-13

INSPECTOR KEN LINDSAY

DATE 6-6-91

RECORDER KEN LINDSAY MISC. \_\_\_\_\_

POSTED 40 501 400 SM G. B. VR.



↑ N

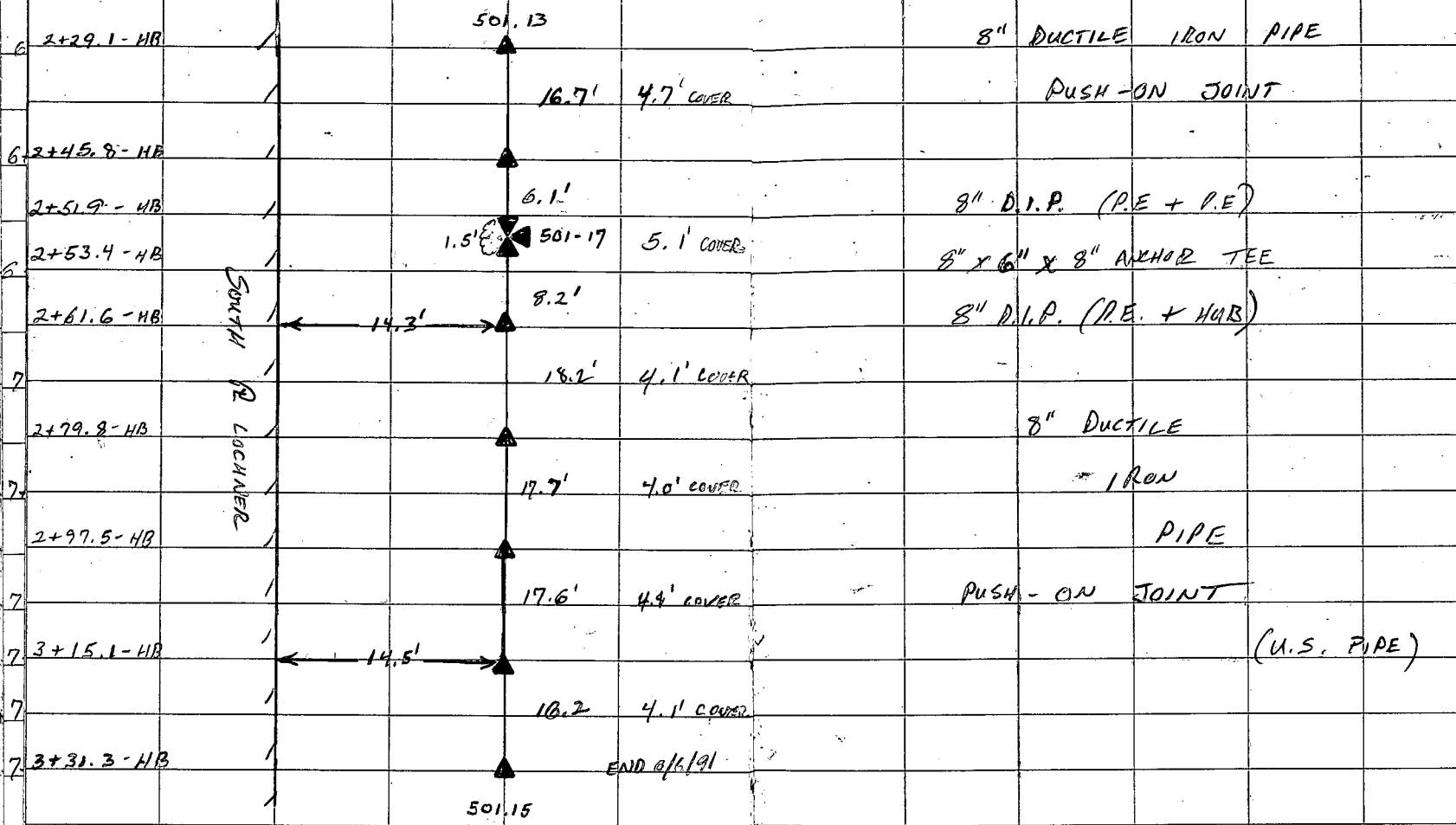
CONTRACTOR GORDON PHILLIPS F.B. # 501-14

INSPECTOR KEN LINDSAY DATE 6-6-91

RECORDER KEN LINDSAY MISC. \_\_\_\_\_

POSTED 40 GA 400 GA G.B. ~ H.B. ~ V.R. ~

STREET LOCKNER PC DOMESTIC ✓  
LOCATION E. OF PORTLAND AVE MAIN 8"  
DESCRIPTION NEW 8" WATERMAIN SERVICE \_\_\_\_\_  
HYDRANT \_\_\_\_\_



STREET LOCHNER PL.

LOCATION EAST OF PORTLAND AVE

DESCRIPTION NEW 8" WATERMAIN

DOMESTIC ✓

HOLLY       

MAIN 8"

SERVICE       

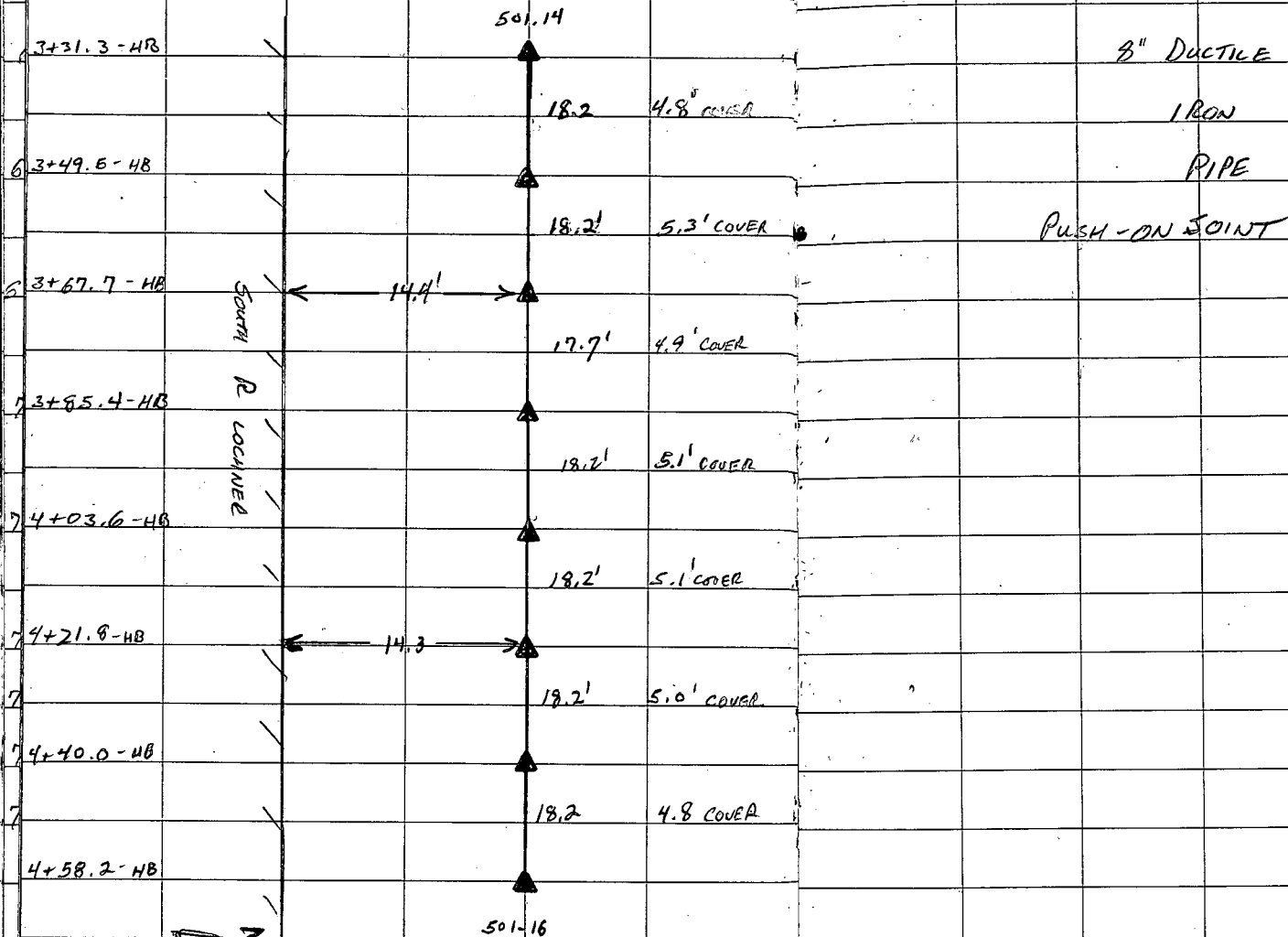
HYDRANT       

CONTRACTOR GORDON PHILLIPS F. B. # 501-15 ✓

INSPECTOR KEN LINDSAY DATE 6-7-91

RECORDER KEN LINDSAY MISC.       

POSTED '40 Em 400 Em G. B.        H.B.        V.R.       



STREET LOCHNER PL.

LOCATION EAST OF PORTLAND AVE

DESCRIPTION NEW 8" WATER MAIN

DOMESTIC ✓  
HOLLY \_\_\_\_\_  
MAIN 8" \_\_\_\_\_  
SERVICE \_\_\_\_\_

HYDRANT 501-15

4+58.2-HB

18.2' 4.7' COVER

4+76.4-HB

19.5'

17.7' 4.8' COVER

4+94.1-HB

17.7' 5.1' COVER

5+11.8-HB

12.3'

5+24.1-HB

501-18

1.5' 4.6' COVER

5+25.6-HB

END 6-7-91

SOUTH R. LOCHNER



CONTRACTOR GORDAN PHILLIPS F. B. # 501-16 ✓

INSPECTOR KEN LINDSAY DATE 6-7-91

RECORDER KEN LINDSAY MISC. \_\_\_\_\_

POSTED 40 5m 400 5m G. B. H.B. V.R.

8" DUCTILE

IRON

PIPE

PUSH-ON JOINT

8" D.I.P. (PE + PE)

8" X 6" X 8" ANCHOR TEE

8" PLUG

HYD. LOCATION CHANGE  
AS PER RUSSELL HARDING  
6-7-91

CONTRACTOR GORDON PHILLIPS F. B. # 501-17

INSPECTOR KEN LINDSAY DATE 6-10-91

RECORDER KEN LINDSAY MISC. \_\_\_\_\_

POSTED 40 SM 400 SM G. B. SM H. B. SM V. R. SM

STREET LOCHNER PL

DOMESTIC \_\_\_\_\_

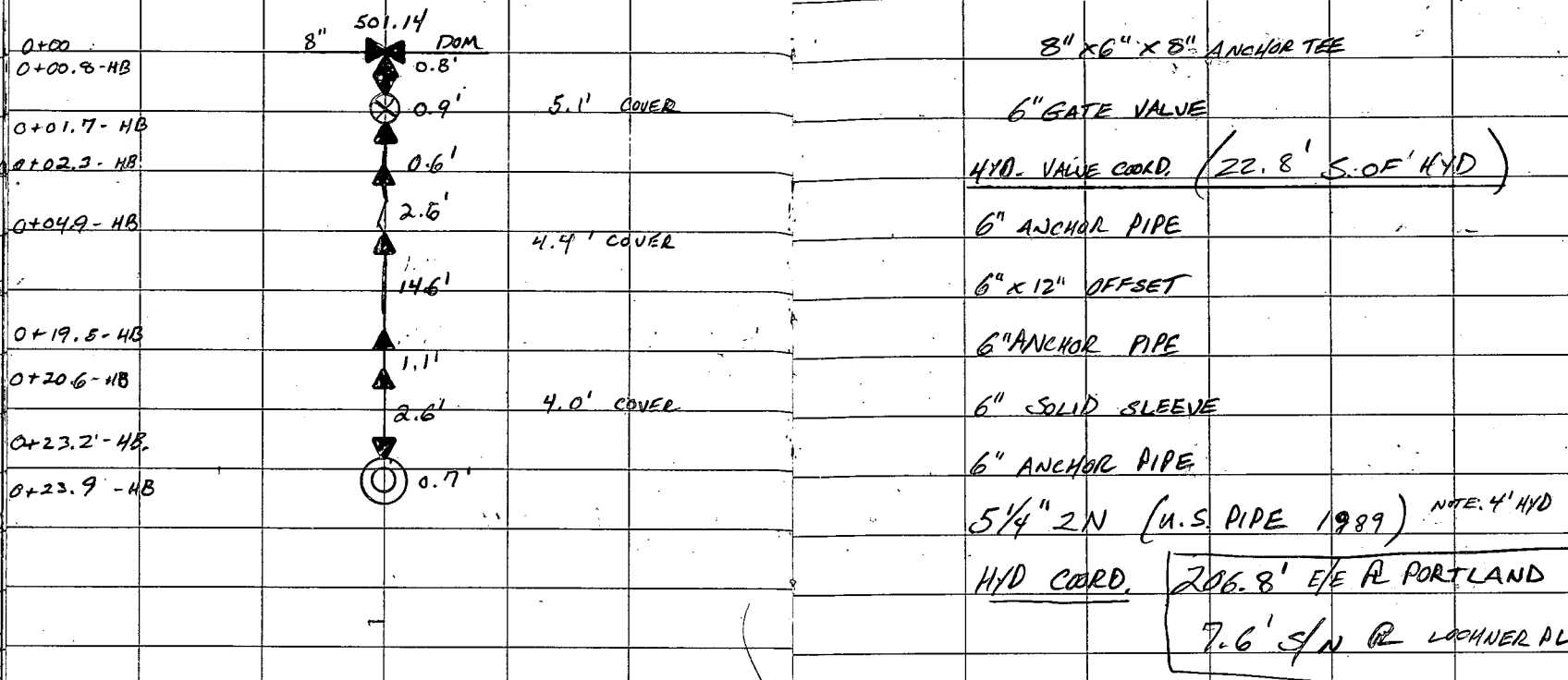
HOLLY \_\_\_\_\_

MAIN \_\_\_\_\_

LOCATION # 5 LOCHNER PL

SERVICE \_\_\_\_\_

DESCRIPTION NEW HYDRANT HYDRANT



STREET LOCHNER PL

LOCATION #21 LOCHNER PL

DESCRIPTION NEW HYDRANT

DOMESTIC \_\_\_\_\_

HOLLY \_\_\_\_\_

MAIN \_\_\_\_\_

SERVICE \_\_\_\_\_

HYDRANT

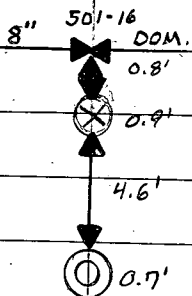
CONTRACTOR GORDON PHILLIPS F. B. # 501-18 ✓

INSPECTOR KEN LINDSAY DATE 6-10-91

RECORDER KEN LINDSAY MISC. \_\_\_\_\_

POSTED 40 GM 400 GM G. B. GM H. B. GM V. R. GM

0+00  
0+00.8-HB  
0+01.7-HB  
0+02  
0+06.3-HB  
0+07.0-HB



8" x 6" x 8" ANCHOR TEE

6" GATE VALVE

HYD VALVE COORD. 5.8' N. OF HYD

6" ANCHOR PIPE

5 1/4" 2N (U.S. PIPE 1989)

HYD. COORD

479.8' E/E R PORTLAND

8.0 N/S E LOCHNER

N  
↓

STREET EUCLID ST

DOMESTIC ✓  
HOLLY  
MAIN 8"  
SERVICE

LOCATION INTERSECTION OF ATLAS

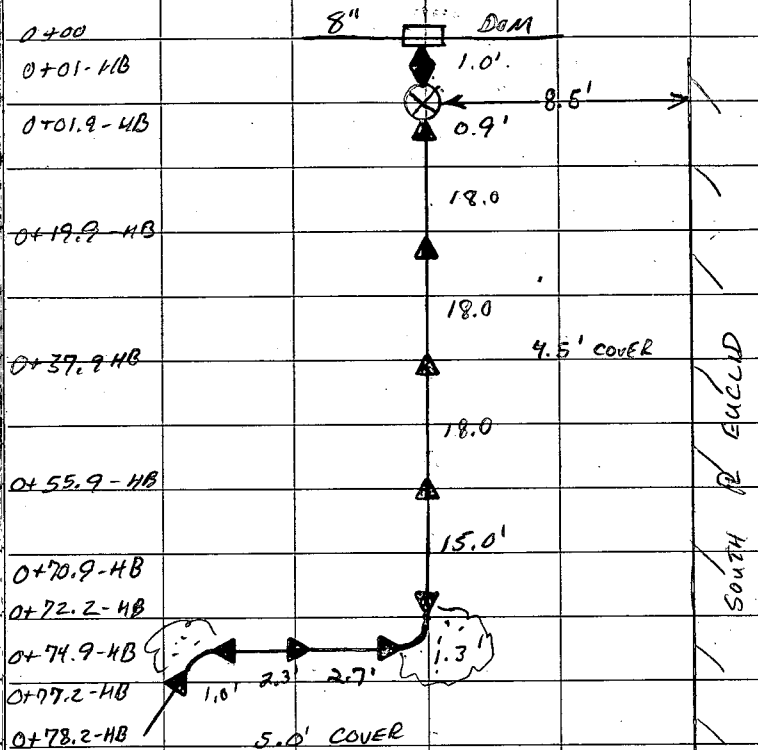
DESCRIPTION NEW 8" WATER MAIN HYDRANT

CONTRACTOR R. W. W. GRID F. B. # 501-19 ✓

INSPECTOR ASST. SUP. KAREN STANBURN DATE 6-10-91

RECORDER MISC

POSTED 40 400 G. B. H. B. V. R.



8" x 8" TAPPING SLEEVE

8" GATE VALVE

VALVE COORD. 10.0' W/E R. ATLAS ST  
8.5' N/S R. EUCLID ST.

8" DUCTILE  
IRON  
PIPE

MECHANICAL JOINT

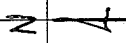
8" 90° BEND (M.J. + M.J.)

8" D.I.P. (M.J. + M.J.)

8" x 12" OFFSET (M.J. + M.J.) VERTICAL

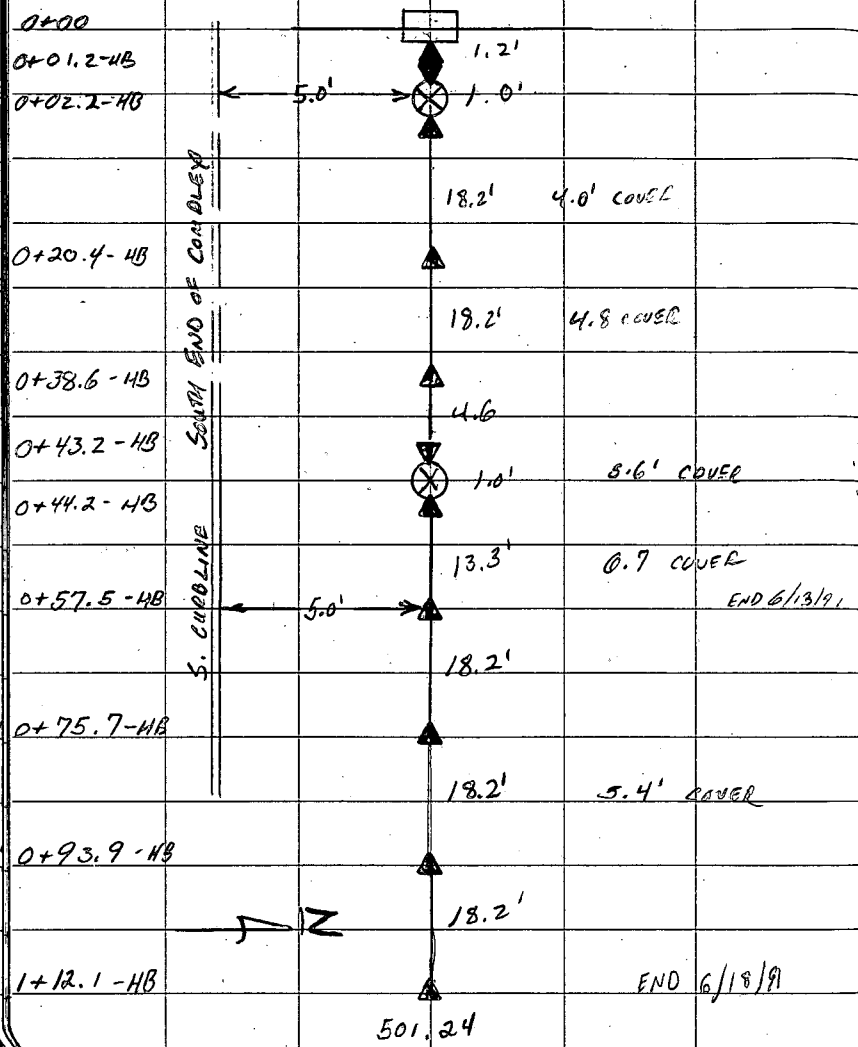
8" 45° BEND

EXISTING 8" WATER MAIN



STREET COLFAX ST. DOMESTIC ✓  
 LOCATION 210 COLFAX ST (SOUTH END) MAIN SERVICE 8"  
 DESCRIPTION NEW 8" WATER MAIN HYDRANT

CONTRACTOR RWW F.B. # 501-20  
 INSPECTOR CALL BRANDON DATE 6-10-91  
 RECORDER KEN LINDSAY MISC.  
 POSTED 40 400 G.B. H.B. V.R.



12" x 8" x 12" TAPPING SLEEVE  
 8" GATE VALVE (1986 MET OPEN RT.)  
 VALVE COORD. 5.0' N/S CURBLINE (COMPLEX)  
 2.9' E/W CURBLINE COLFAX ST  
 155.2' S/4<sup>TH</sup> HYD. S/EMERSON ST  
 8" D.I.P. (MECH JOINT)  
 8" GATE VALVE (MET OPEN RT.)  
 VALVE COORD. 5.0' N/S CURBLINE  
 4.9' E/E CURBLINE COLFAX ST  
 8" DUCTILE IRON PIPE  
 MECH. JOINT

STREET COLFAX ST

DOMESTIC HOLLY MAIN 8" SERVICE

LOCATION 210 COLFAX ST (NORTH END)

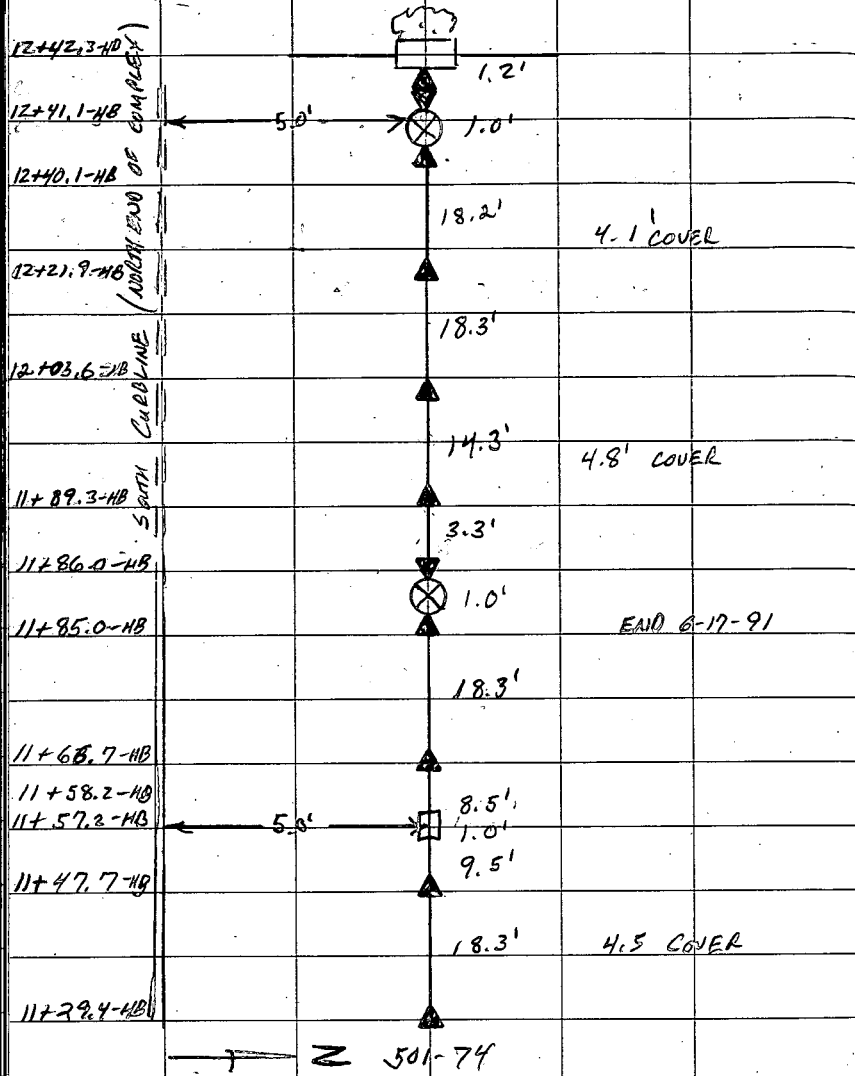
DESCRIPTION NEW 8" WATERMAIN HYDRANT

CONTRACTOR R.W.W. F.B. # 501-21 ✓

INSPECTOR R.W.W. DATE 6-17-91

RECORDER KEN LINDSAY MISC.

POSTED 40 400 G.B. H.B. V.R.



12" x 8" x 12" TAPPING SLEEVE

8" GATE VALVE (MGT OPEN AT)

VALVE COORD 5.0' N/S CURBLINE

3.8' E/W CURBLINE COLFAX ST

126.0' S/3RD HYD S. EMERSON ST

8" D.I.P. - MECH JOINT

8" GATE VALVE

VALVE COORD 5.0' N/S CURBLINE

18.9' E/E CURBLINE COLFAX ST.

8" D.I.P (PE + HUB)

8" D.I.P (PE + PE)

8" SOLID SLEEVE

8" D.I.P (P.E. + HUB)

501-74

STREET ELIZABETH PL

LOCATION INTERSECTION OF MILLER ST. SERVICE

DESCRIPTION NEW 6" WATERMAIN & HYD

DOMESTIC ✓  
HOLLY  
MAIN 6"

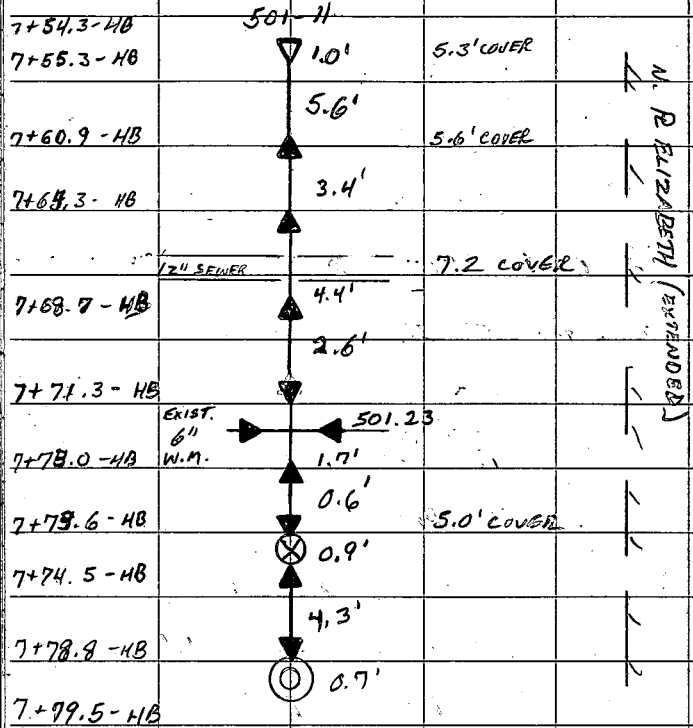
HYDRANT ✓

CONTRACTOR GORDON A. HILLIPS F. B. # 501-22

INSPECTOR KEN LINDSEY DATE 6-18-91

RECORDER KEN LINDSEY MISC.

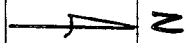
POSTED 40 (SM) 400 (SM) G. B. (SM) H. B. (SM) V. R. (SM)



W. R. ELIZABETH (EXTENDED)

NOTE: 18" BETWEEN SEWER & NEW W.M.

EAST R. MILLER ST



8" x 6" REDUCER (MS + MS)

6" DIP (PE + PE)

6" x 18" OFFSET (MS + MS)

6" D.I.P. (PE + HUB)

6" x 24" OFFSET (MS + MS)

6" x 6" TEE (MS + MS)

6" D.I.P. (PE + P.E.)

6" GATE VALVE (1989 MET OPEN RT)

HYD. VALVE COORD. 4.6' W. OF HYD

6" D.I.P. (P.E. + P.E.)

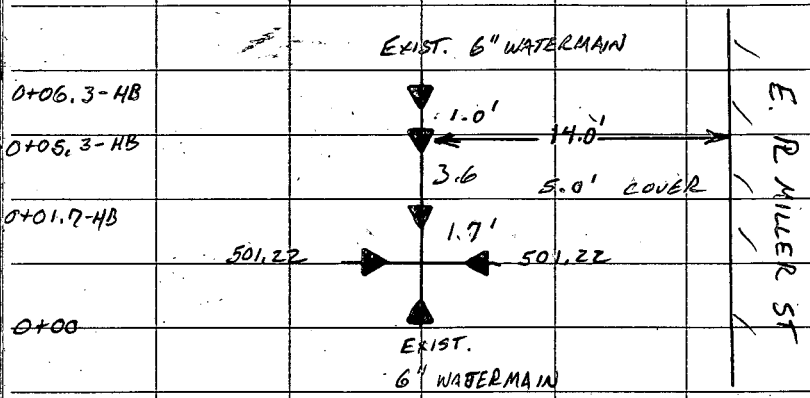
5 1/2" 2N (US PIPE 1971)

HYD. COORD. 7.3' W/E R MILLER

346.9' N/N R DAY ST

CONTRACTOR GORDON PHILLIPS F. B. # 501-23  
 INSPECTOR KEN LINDSAY DATE 6-18-91  
 RECORDER KEN LINDSAY MISC. \_\_\_\_\_  
 POSTED 40 GM 400 GM G. B. \_\_\_\_\_ H.B. \_\_\_\_\_ V.R. \_\_\_\_\_

STREET MILLER ST DOMESTIC   
 HOLLY \_\_\_\_\_  
 MAIN 6" \_\_\_\_\_  
 LOCATION INTERSECTION ELIZABETH PL SERVICE \_\_\_\_\_  
 DESCRIPTION NEW 6" WATERMAIN HYDRANT \_\_\_\_\_



6" SOLID SLEEVE  
 6" D.I.P. (P.E. + P.E.)  
 6" x 6" TEE (M.J. + M.J.)



STREET COLFAX ST

LOCATION 210 COLFAX ST (SOUTH END)

DESCRIPTION NEW 8" WATER MAIN

DOMESTIC ✓  
HOLLY \_\_\_\_\_  
MAIN 8" \_\_\_\_\_  
SERVICE \_\_\_\_\_

HYDRANT \_\_\_\_\_

CONTRACTOR R.W.W. F.B. #501-24 ✓

INSPECTOR CARL BRANDON DATE 6-19-91

RECORDER KEN LINDSAY MISC. \_\_\_\_\_

POSTED 40 400 SM G.B. H.B. V.R. \_\_\_\_\_

1+12.1-HB

501-20

8" DUCTILE

18.3' 4.7' COVER

IRON

1+30.4-HB

PIPE

18.3'

MECHANICAL JOINT

1+48.7-HB

5.0'

18.3'

1+67.0-HB

4.5' COVER

1+76.9-HB

9.9'

1+78.3-HB

501-26

1.4' TOP

8" X 6" X 8" ANCHOR TEE

1+86.4-HB

8.4' END (20/9)

8" D.I.P (I.P.E. + M.J.)

1+88.0-HB

1.6'

1+89.4-HB

1.4' 505-4

8" X 6" X 8" ANCHOR TEE

2+05.6-HB

5.0'

16.2'

4.5' COVER

8" DUCTILE IRON

18.2'

PIPE

2+23.8-HB

Z

501-30

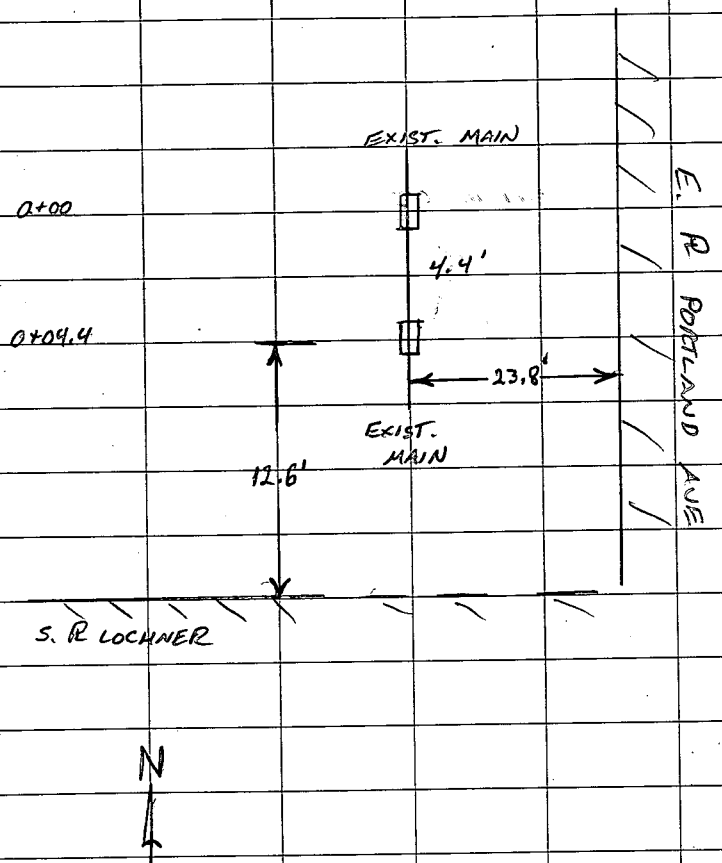
MECHANICAL JOINT

S. CURBLINE (SOUTH END OF COMPLEX)

STREET PORTLAND AVE  
 LOCATION INTERSECTION LOCHNER PL  
 DESCRIPTION 8" INSERTION SLEEVE HYDRANT

DOMESTIC   
 HOLLY   
 MAIN 8"  
 SERVICE

INSPECTOR GORDON PHILLIPS F. B. # 501-25  
 RECORDER KEN LINDSAY DATE 6-20-91  
 POSTED 40 400 - G. B. - H. B. - V. R.

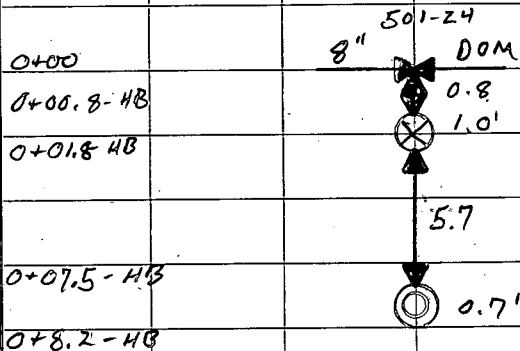


8" SOLID SLEEVE  
 8" D.I.P.  
 8" SOLID SLEEVE

STREET COLFAX ST  
 LOCATION 210 COLFAX ST  
 DESCRIPTION NEW HYDRANT

DOMESTIC \_\_\_\_\_  
 HOLLY \_\_\_\_\_  
 MAIN \_\_\_\_\_  
 SERVICE \_\_\_\_\_  
 HYDRANT

R. W. W F. B. # 501-26  
 INSPECTOR CARL BRANDON DATE 6/20/91  
 RECORDER KEN LINDSA/MISC.  
 POSTED 40 GM 400 GM G. B. H.B. V.R.



8" x 6" x 8" ANCHOR TEE  
 6" GATE VALVE  
 HYD VALVE COORD 6.5' N. OF HYD  
 6" ANCHOR PIPE  
 5 1/4" 2N (U.S PIPE 1991)

HYD COORD | 133.0' E/E CURBLINE COLFAX  
 3.3' S/S CURBLINE COMPLEX SOUTH END OF



STREET ST. JOHN'S PK

LOCATION EAST OF LAKE AVE

DESCRIPTION NEW 8" WATER MAIN

DOMESTIC ✓

HOLLY

MAIN

SERVICE

HYDRANT

CONTRACTOR GORDON PHILLIPS

F. B. # 501-27 ✓

INSPECTOR KEN LINDSAY

DATE 6/21/91

RECORDER KEN LINDSAY MISC.

POSTED 40

SM 400

G. B.

H. B.

V. R.

0+00

0+00.9 - HB

0+02.2 - HB

0+20.4 - HB

0+38.6 - HB

0+56.8 - HB

0+75.0 - HB

0+93.2 - HB

1+11.4 - HB

EXIST. 8" WATER MAIN



0.9'

1.3'

18.2'

18.2'

18.2'

18.2'

18.2'

18.2'

18.2'

18.2'

18.2'

18.2'

18.2'

18.2'

18.2'

18.2'

18.2'

18.2'

18.2'

18.2'

18.2'

18.2'

18.2'

18.2'

18.2'

18.2'

18.2'

18.2'

30.5'

4.5' COVER

4.5' COVER

4.5' COVER

4.5' COVER

4.5' COVER

4.5' COVER

4.5' COVER

4.5' COVER

4.5' COVER

4.5' COVER

4.5' COVER

4.5' COVER

4.5' COVER

4.5' COVER

4.5' COVER

4.5' COVER

4.5' COVER

4.5' COVER

4.5' COVER

4.5' COVER

4.5' COVER

4.5' COVER

4.5' COVER

4.5' COVER

4.5' COVER

4.5' COVER

4.5' COVER

4.5' COVER

4.5' COVER

4.5' COVER

4.5' COVER

4.5' COVER

4.5' COVER

4.5' COVER

4.5' COVER

4.5' COVER

4.5' COVER

NORTH R ST. JOHN'S PK

→ Z

501-28

EXIST. 8" D.I.P.

8" GATE VALVE (1989 MET OPENS RT)

VALVE COORD. / 30.5' S/N R ST. JOHN'S  
184.1' E/E R RIVER ST

8" D.I.P. (PE + HUB)

8" DUCTILE

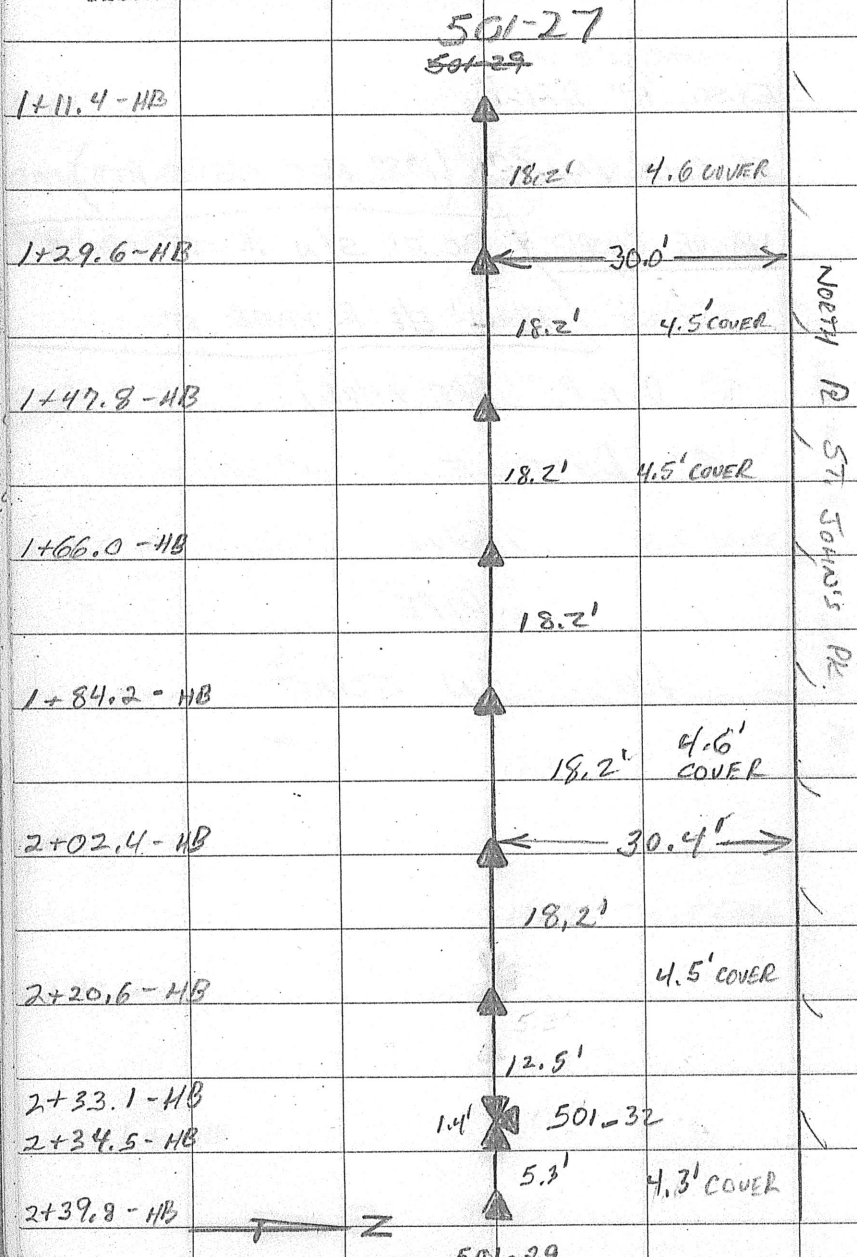
IRON

PIPE

PUSH-ON JOINT

STREET ST. JOHN'S PK DOMESTIC ✓  
 HOLLY \_\_\_\_\_  
 MAIN 8"  
 LOCATION EAST OF LAKE AVE SERVICE  
 DESCRIPTION NEW 8" WATERMAIN HYDRANT

CONTRACTOR GORDON PHILLIPS F. B. # 501-28 ✓  
 INSPECTOR KEN LINDSAY DATE 6-21-91  
 RECORDER KEN LINDSAY MISC. \_\_\_\_\_  
 POSTED 40 GM 400 GM G. B. \_\_\_\_\_ H. B. \_\_\_\_\_ V. R. \_\_\_\_\_



8" DUCTILE  
 IRON  
 PIPE  
 PUSH-ON JOINT

8" x 6" x 8" ANCHOR TEE  
 8" D.I.P (P.E. + HUB)

STREET ST. JOHN PK

LOCATION EAST OF LAKE AVE

DESCRIPTION NEW 8" WATER MAIN

DOMESTIC ✓  
HOLLY  
MAIN 8"  
SERVICE

HYDRANT

CONTRACTOR GORDON PHILLIPS F.B. # 501-29

INSPECTOR K. LINDSAY DATE 6/21/91

RECORDER K. LINDSAY MISC.

POSTED 40 SW 400 SW G.B. H.B. V.R.

501-28

2+39.8-HB

18.2' 4.4' COVER

2+58.0-HB

30.2'

18.2'

2+76.2-HB

4.3' COVER  
END 6/21/91

18.2'

2+94.4-HB

4.7' COVER

18.2'

3+12.6-HB

4.5 COVER

17.6'

3+30.2-HB

18.2' 4.5' COVER

18.2'

3+48.4-HB

30.3'

18.2'

3+66.6-HB

18.2' 4.4' COVER

18.2'

3+84.8-HB

501-31

NORTH A ST. JOHN'S

8" DUCTILE  
IRON  
PIPE  
PUSH-ON JOINT

STREET COLFAX ST

DOMESTIC

CONTRACTOR RWW F. B. # 501-30

HOLLY           

INSPECTOR CARL BRANDON DATE 6-21-91

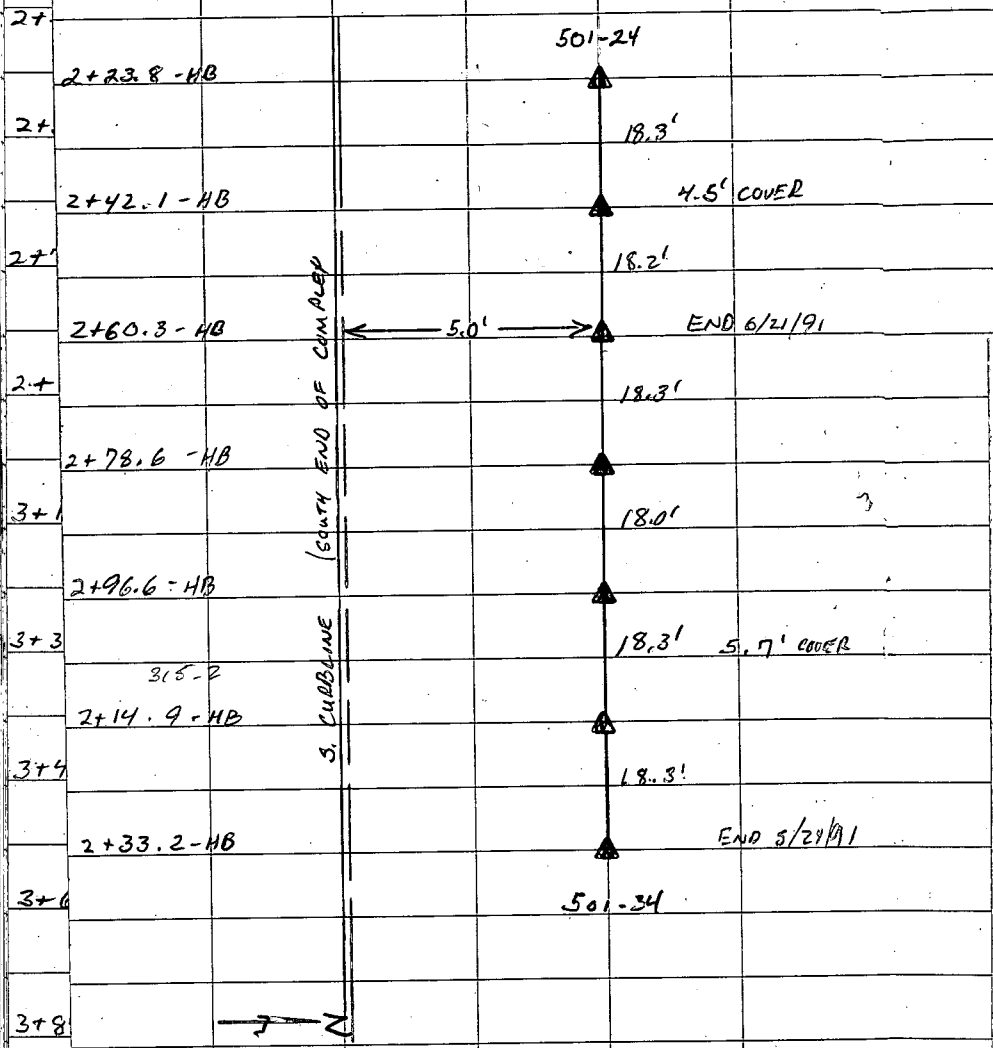
MAIN 8"

LOCATION 210 COLFAX ST. (SOUTH END) SERVICE           

RECORDER KEN LINDSAY MISC.           

DESCRIPTION NEW 8" WATER MAIN HYDRANT           

POSTED 40 GM 400 GM G. B. ~ H.B. ~ V.R. ~



8" DUCTILE  
IRON  
PIPE  
MECHANICAL JOINT

Should be  
2+14.9  
3+14.9

STREET ST. JOHN'S PK

LOCATION WEST OF HUGHES AL

DESCRIPTION NEW 8" WATER MAIN

DOMESTIC ✓  
HOLLY ✓  
MAIN 4" ✓  
SERVICE ✓

HYDRANT ✓

INSPECTOR GORDON PHILLIPS F.B. #501-31

INSPECTOR KEN LINDSAY DATE 6-24-91

RECORDER KEN LINDSAY MISC

POSTED 40 (SM) 400 (SM) G.B. ✓ H.B. ✓ V.R. ✓

3+84.8 - HB

3+93.6 - HB

3+95.0 - HB

4+04.0 - HB

4+14.1 - HB

4+15.1 - HB

4+16.0 - HB

4+34.2 - HB

4+47.9 - HB

4+48.8 - HB

4+50.4 - HB

4+51.3 - HB

501-29

8.8'

501-33

4.3' COVER

9.0'

10.1'

30.3' END 6-24-91

1.0'

4.4' COVER

0.9'

18.2'

6.4' COVER

13.7'

0.9'

0.9'

1.6'

0.9'

6.9' COVER

6.9' COVER

53.8'

CENTER OF 6" 45° BEND

NORTH  
R. ST. JOHN'S PK

8" D.I.P. (PE + PE)

8" x 6" x 8" ANCHOR TEE

8" D.I.P. (PE + HUB)

8" D.I.P. (PE + PE)

8" 45° BEND (MJ + MJ)

8" D.I.P. (PE + HUB)

8" D.I.P. (PE + HUB)

8" D.I.P. (PE + PE)

8" x 6" REDUCER (MJ + M.J.)

6" D.I.P. (PE + PE)

6" 45° BEND (MJ + M.J.)

→ N

STREET ST. JOHN'S PK

DOMESTIC

HOLLY

LOCATION # 54 ST. JOHN'S PK

MAIN

SERVICE

DESCRIPTION NEW HYD

HYDRANT

CONTRACTOR GORDON PHILLIPS F.B. # 501-32 ✓

INSPECTOR KEN LINDSAY

DATE 6-24-91

RECORDER KEN LINDSAY

MISC.

POSTED 40

400

G.B.

H.B.

V.R.

0+00  
0+00.8-HB

8"



DOM

0.8'

0+01.7-HB



0.9'

0+09.3-HB



0.7'

0+10.0-HB



0.7'

NORTH R. ST. JOHN'S PK

8" x 6" x 8" ANCHOR TEE

6" GATE VALVE (1991 MET, OPENS RT)

HYD VALVE COORD - 8.9' S. OF HYD

6" D.I.P. ANCHOR PIPE

5 1/4" 2N (U.S. PIPE 1991)

HYD COORD.

20.4' S/N R ST. JOHN'S PK

248.5' EAST OF 1ST HYD FROM RIVER ST.



STREET ST. JOHN'S PK

DOMESTIC

CONTRACTOR GORDON PHILLIPS F.B. # 501-33 ✓

HOLLY

INSPECTOR K. LINDSAY

DATE 6-24-91 501-33

LOCATION

ACROSS FROM  
# 73 ST. JOHN'S

MAIN  
SERVICE

RECORDED K. LINDSAY

MISC.

6-24-91

DESCRIPTION

NEW HYD HYDRANT ✓

POSTED

Jm Jm Jm Jm H.S. V.R.

0+00  
0+00.8-HB

8" 501-31  
DOM

8" X 6" X 8" ANCHOR TEE

0+01.7-HB

0.8'

6" GATE VALVE

0.9'

HYD VALVE COORD

8.7' S. OF HYD

7.6'

0+09.3-HB

0.7'

6" D.I.P. ANCHOR PIPE

0+10.0-HB

5 1/4" 2N (U.S. PIPE 1991)

HYD COORD

20.4' S/N R. ST. JOHN'S PK

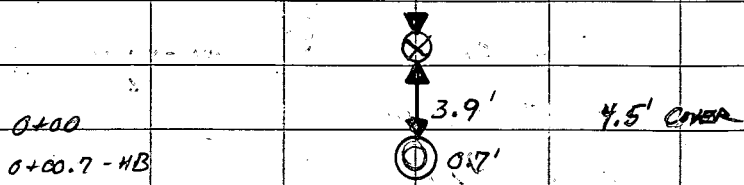
NORTH R. ST. JOHN'S PK

161.4' E / 2ND HYD FROM RIVER ST.



STREET COLLEGE AVE (RED CROSS BUILDING) DOMESTIC HOLLY  
 LOCATION 1ST EAST OF PRINCE ST MAIN SERVICE  
 DESCRIPTION NEW HYD HYDRANT ✓

CONTRACTOR RWL F. B. # 501-35 ✓  
 INSPECTOR \_\_\_\_\_ DATE 6-26-91  
 RECORDER KEN LINDAY MISC. \_\_\_\_\_  
 POSTED 40 GM 400 GM G. B. \_\_\_\_\_ H. B. GM V.R. \_\_\_\_\_



—————  
 S. R. COLLEGE AVE.

N  
 ↑

EXISTING 6" GATE VALVE VALUE COULD. 4.7' N/HYD  
 EXISTING 6" ANCHOR PIPE  
 NEW HYD 5 1/4" 2N (U.S. PIPE 1988)  
 HYD COORD 207.8' E/E R PRINCE ST.  
 10.5 N/S R COLLEGE AVE

STREET COLFAX ST. COMPLEX

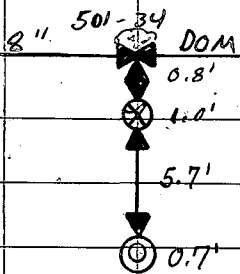
LOCATION 210 COLFAX ST

DESCRIPTION NEW 8" WATER MAIN HYDRANT ✓

DOMESTIC \_\_\_\_\_  
HOLLY \_\_\_\_\_  
MAIN \_\_\_\_\_  
SERVICE \_\_\_\_\_

CONTRACTOR R. W. W. F. B. # 501-36 ✓  
INSPECTOR CARL BRANDON DATE 6-26-91  
RECORDER KEN LINDSEY MISC.  
POSTED 40 50 400 50 6.8. 50 H.B. 50 V.R. \_\_\_\_\_

0+00  
0+00.8 - HB  
0+01.8 - HB  
0+07.5 - HB  
0+08.2 - HB



8" x 6" x 8" ANCHOR TEE  
6" GATE VALVE (MET OPEN RT)  
HYD VALVE COORD. 6.3' N./HYD  
6" ANCHOR PIPE  
5 1/4" 2N (U.S. PIPE 1992)  
HYD COORD 279.4'E/1ST HYD  
3.3' S/S CURBLINE SOUTH END OF COMPLEX



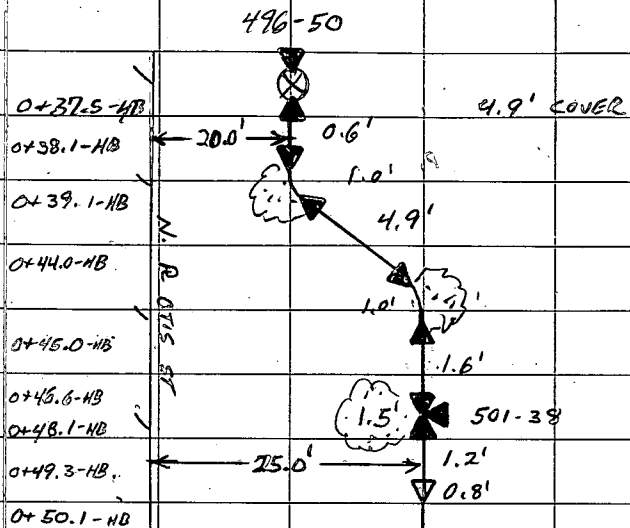
STREET OTIS ST

LOCATION WEST OF SHERMAN ST

DESCRIPTION NEW 8" WATERMAIN

DOMESTIC ✓  
HOLLY  
MAIN 8"  
SERVICE  
HYDRANT

CONTRACTOR MELI BROS. F. B. # 501-37 ✓  
INSPECTOR PETE HUDAK DATE 6-26-91  
RECORDER KEN LINDSEY MISC.  
POSTED 40 400 G. B. H. B. V. R.



EXISTING 8" GATE VALVE

8" D.I.P. (P.E. + P.E.)

8" 45° BEND (M.J. + M.J.)

8" D.I.P. (P.E. + P.E.)

8" 45° BEND (M.J. + M.J.)

8" D.I.P. (P.E. + P.E.)

8" X 8" X 8" TEE

8" D.I.P. (P.E. + P.E.)

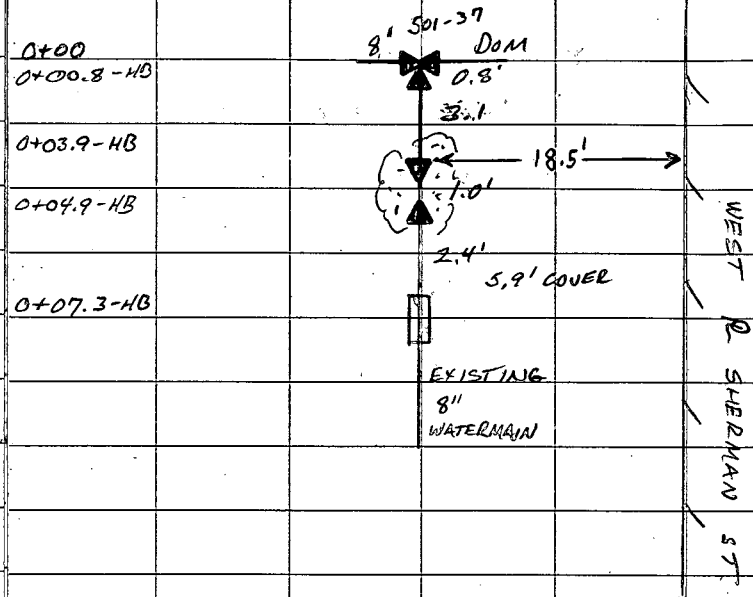
8" X 6" REDUCER (M.J. + M.J.)

EXISTING 6" WATERMAIN



STREET OTIS ST  
 LOCATION W / SHERMAN ST  
 DESCRIPTION NEW 8" WATERMAIN HYDRANT

CONTRACTOR MGLI Bros F. B. # 501-38 ✓  
 INSPECTOR PETE HUDAK DATE 6-26-91  
 RECORDER KEN LINDSAY MISC.  
 POSTED 40 400 G. B. - H. B. - V. R. -



8" x 8" x 8" TEE  
 8" D.I.P. (PE + PE)  
 8" 22 1/2° BEND. (VERTICAL) (MJ + MJ)  
 8" D.I.P. (PE + M.J.)  
 8" SOLID SLEEVE (MJ + MJ)  
 EXISTING 8" WATERMAIN



STREET WOODBURY ST

LOCATION E. OF HUDSON AVE

DESCRIPTION NEW 8" WATER MAIN HYDRANT

DOMESTIC HOLLY MAIN SERVICE 8"

7.0'

0+00  
0+00.9-HB  
0+01.8-HB

12" DOM.  
0.9'  
0.9' 4.5' COVER

0+06.8-HB

39.9' 5.0'

20.2' 6.0' COVER

0+26.8-HB  
0+27.8-HB  
0+28.8-HB

E. OF HUDSON AVE

17.0' 1.0'  
1.0'

0+49.0-HB

20.2'

0+69.2-HB

20.2'

4.5' COVER

0+89.4-HB

20.2'

17.5'

1+09.6-HB

20.2'

1+29.8-HB

20.2'

501-43

COMPUTER VILLAGER

F. B. # 501-39

INSPECTOR ED ERB

DATE 6-27-93

RECORDER KEN LINDSAY

MISC.

POSTED 40

SM 400 SM G. B SM H. B. V. 1111111111

12" x 8" x 12" TAPPING SLEEVE

2" GATE VALVE (MET OPEN RT)

VALVE COORD: 38.6' W/E R HUDSON AVE.  
7.7' S/N R WOODBURY ST.

8" D.I.P. (PE + HUB)

8" DUCTILE IRON PIPE (PE + PE)

8" 11 1/4° BEND (MS + MS)

8" DUCTILE IRON PIPE

PIPE

PUSH-ON JOINT

STREET COLEAX ST COMPLEX

LOCATION 210 COLFAX

DESCRIPTION NEW 8" WATER MAIN HYDRANT

DOMESTIC   
HOLLY   
MAIN 8"  
SERVICE

CONTRACTOR R.W.W. F.B. # 501-40 ✓

INSPECTOR CARL BRANDIN DATE 6-27-91

RECORDER KEN LINDSAY MISC.

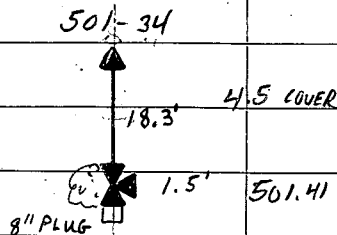
POSTED 40 *SM* 400 - G.B. H.B. V.R.

3+62.8 HB

3+81.1-HB

3+82.6-HB

S. CURBLINE SOUTH END OF COMPLEX



8" D.I.P (PE + PE)

8" x 8" x 8" TEE (M.J. + M.J.)

8" PLUG

← N

STREET COLFAX ST COMPLEX

LOCATION 2<sup>ND</sup> COLFAX ST

DESCRIPTION NEW 8" WATERMAIN HYDRANT

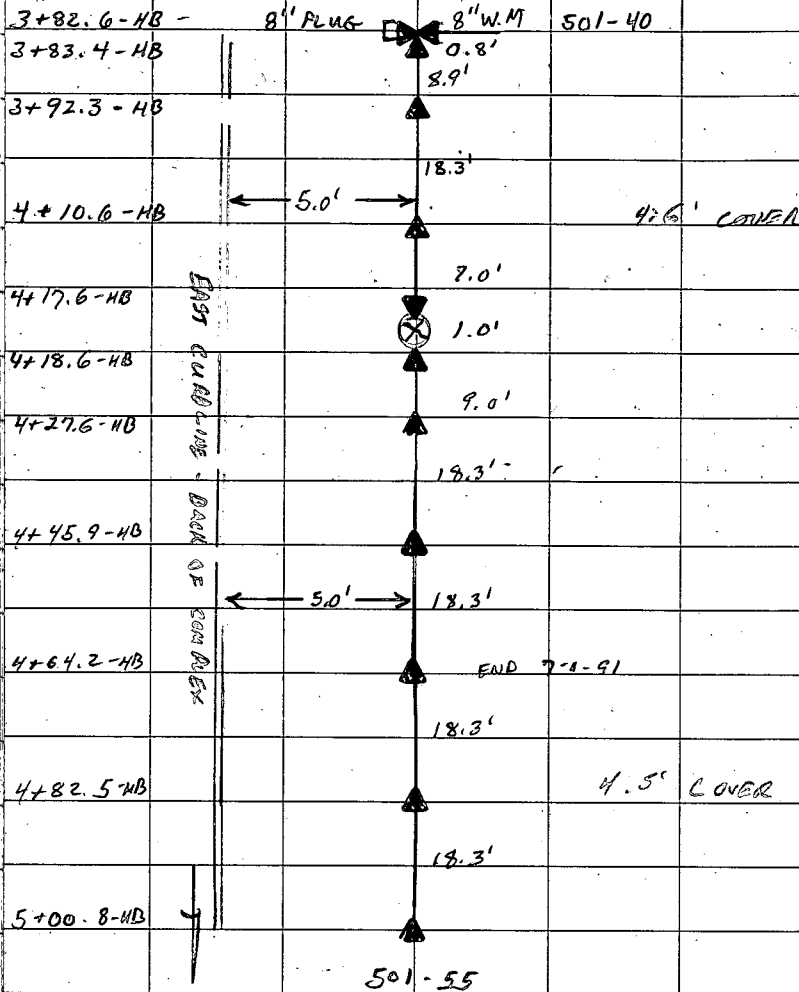
DOMESTIC  
HOLLY  
MAIN  
SERVICE

CONTRACTOR RWW I.D. # 501-41 ✓

INSPECTOR CAROL BRANDON DATE 6-27-91

RECORDER KEN LINDSAY MISC.

POSTED 40 SM 100 - G.B. - H.B. - V.R.



8" x 8" x 8" TEE

8" D.I.P. (P.E. + M.J.)

8" DUCTILE

IRON PIPE

MECHANICAL JOINT

8" GATE VALVE (MET OPEN RT)

VALVE CORD: 32.1' N/S CURBLINE (COMPLEX SOUTH SIDE)

46.2' E/2ND HYD E/COLFAX ST. E. CURBLINE

8" DUCTILE

IRON

PIPE

MECHANICAL JOINT

STREET GENESEE ST

DOMESTIC   
HOLLY   
RAIN  12"

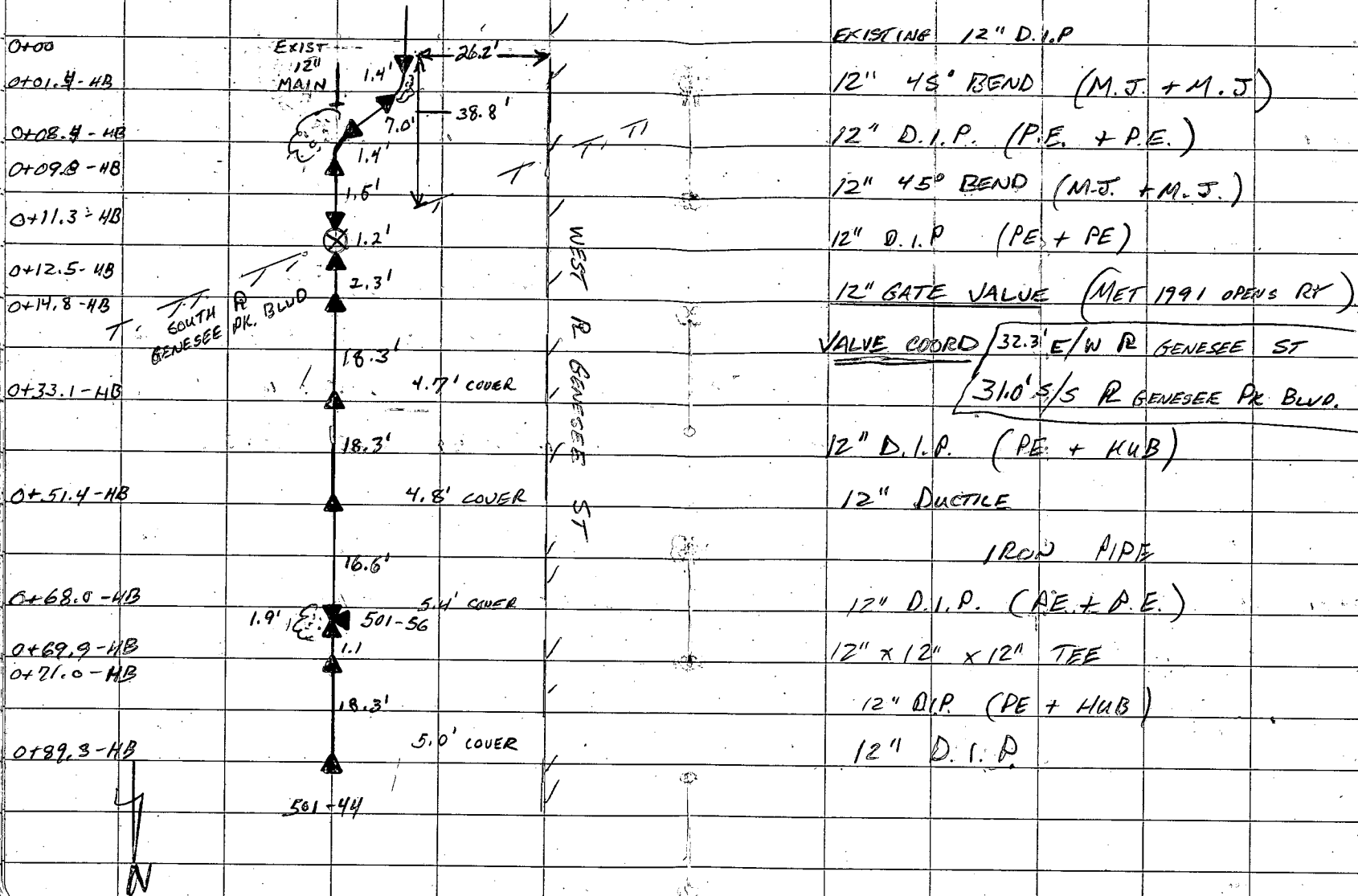
CONTRACTOR GORDON PHILLIPS FEB. # 501-42  
INSPECTOR KEN LINDSAY DATE 6-28-91

LOCATION INTERSECTION, GENESEE & BLDG SERVICE

RECORDER KEN LINDSAY MISC.

DESCRIPTION NEW 12" WATER MAIN HYDRANT

POSTED 40 Em 400 Em G. B. Em H.B. - V.R. -



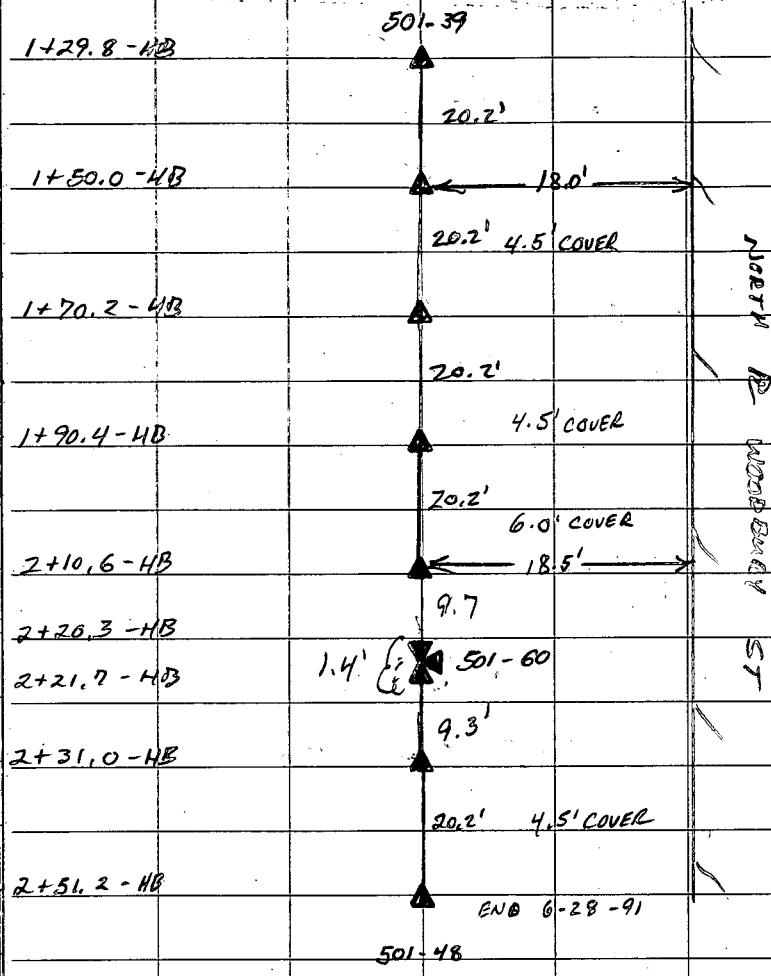
STREET WOODBURY ST

DOMESTIC \_\_\_\_\_  
HOLLY \_\_\_\_\_  
MAIN 8"  
SERVICE \_\_\_\_\_

LOCATION E / HUDSON AVE

DESCRIPTION NEW 8" WATERMAIN HYDRANT

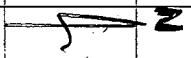
CONTRACTOR ULLAGER F. B. # 501-43 ✓  
INSPECTOR ED ERB DATE 6-28-91  
RECORDER K.L. MISC. \_\_\_\_\_  
POSTED 40 Can 400 G. B. \_\_\_\_\_ H.B. \_\_\_\_\_ V.R. \_\_\_\_\_



NORTH WOODBURY ST

8" DUCTILE  
IRON  
PIPE  
PUSH-ON JOINT

8" D.I.P (P.E. + P.E.)  
8" x 6" x 8" ANCHOR TEE  
8" D.I.P. (P.E. + HUB)





STREET GENESEE ST

DOMESTIC

HOLLY

MAIN 12"

SERVICE

LOCATION N/ GENESEE PK BLVD.

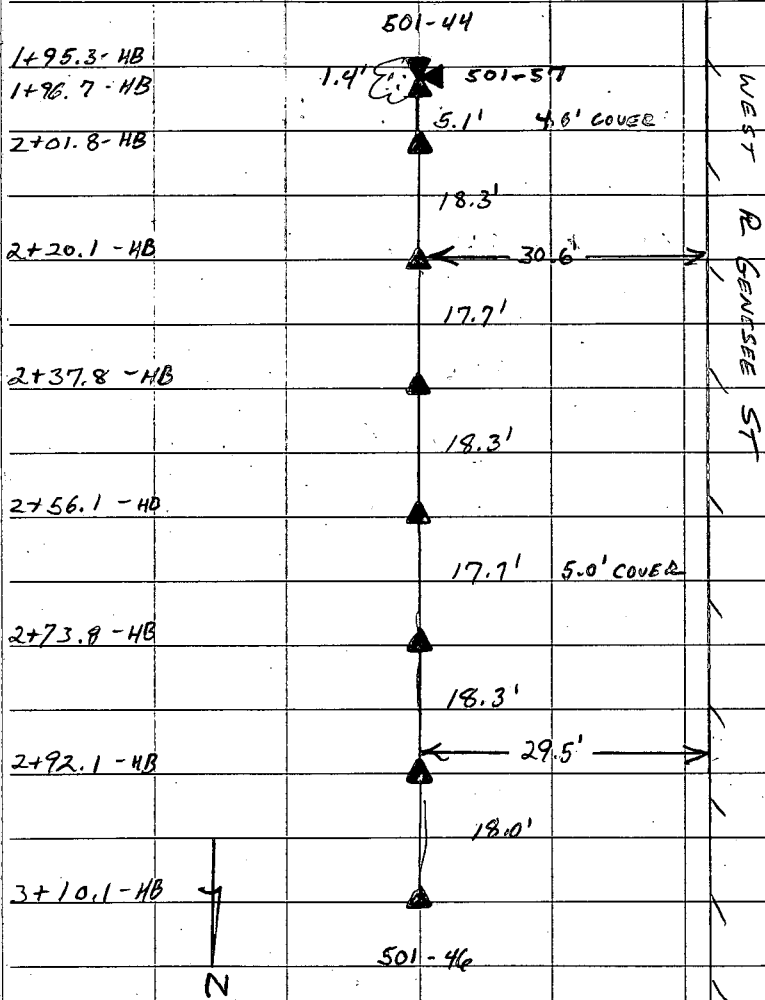
DESCRIPTION NEW 12" WATERMAIN HYDRANT

ENGINEER GORDON PHILLIPS E.B. #501-45

INSPECTOR KEN LINDSAY DATE 7-1-91

RECORDER KEN LINDSAY MISC.

POSTED 40 SM 400 SM G.B.      H.B.      V.R.     



12" X 6" X 12" ANCHOR TEE

12" D.I.P (PE + HUB)

12" DUCTILE

IRON

PIPE

PUSH-ON

JOINT

STREET GENESEE ST  
 LOCATION N/ ARVINE HTS  
 DESCRIPTION NEW 12" WATER MAIN HYDRANT

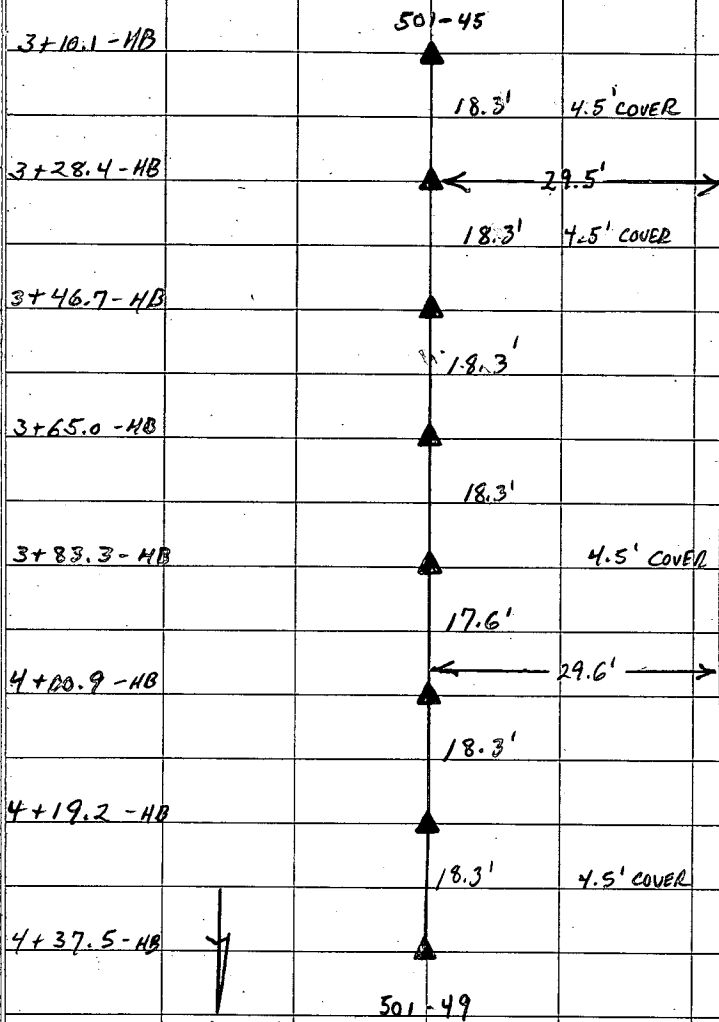
DOMESTIC   
 HOLLY   
 MAIN 12"  
 SERVICE

CONTRACTOR GORDON PHILLIPS F.B. #501-46

INSPECTOR KEN LINDSAY DATE 7-1-91

RECORDS KEN LINDSAY MISC.

POSTED 40 SM 400 SM G. B.  H.B.  V.R.

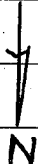


12" DUCTILE

IRON PIPE

PUSH-ON JOINT

501-49



CONTRACTOR VILLAGER F. B. # 591-47 ✓

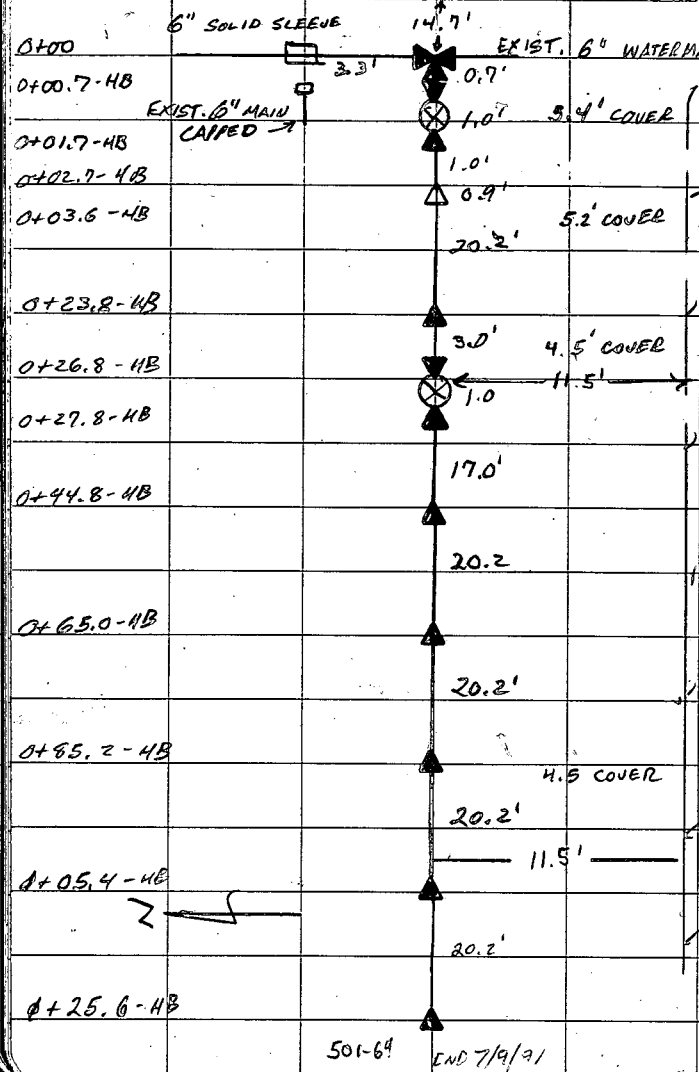
INSPECTOR RALPH HAMILTON DATE 7-1-91

RECORDER KEN LINDSAY MISC.

POSTED 40 SM 400 SM G. B. SM H.B. SM V.R. SM

STREET COUNCIL ST.  
HOLLY  
MAIN 8"  
LOCATION INTERSECTION MILLER ST  
SERVICE

DESCRIPTION NEW 8" WATERMAIN HYDRANT  
E R MILLER ST



6" x 6" x 6" ANCHOR TEE

6" GATE VALVE

VALVE COORD 15.6' W/E R MILLER ST

11.4' N/S R COUNCIL ST

8" D.I.P. (PE + PE)

6" x 8" REDUCER

8" D.I.P.

8" GATE VALVE

VALVE COORD 0.8' W/W R MILLER ST.

11.5' N/S R COUNCIL ST

8" D.I.P. (PE + HUB)

8" DUCTILE

IRON

PIPE

PUSH-ON JOINT

501-64 END 7/9/91

STREET WOODBURY ST

DOMESTIC ✓  
HOLLY  
MAIN 8"  
SERVICE

CONTRACTOR VILLASER  
INSPECTOR ED ERB

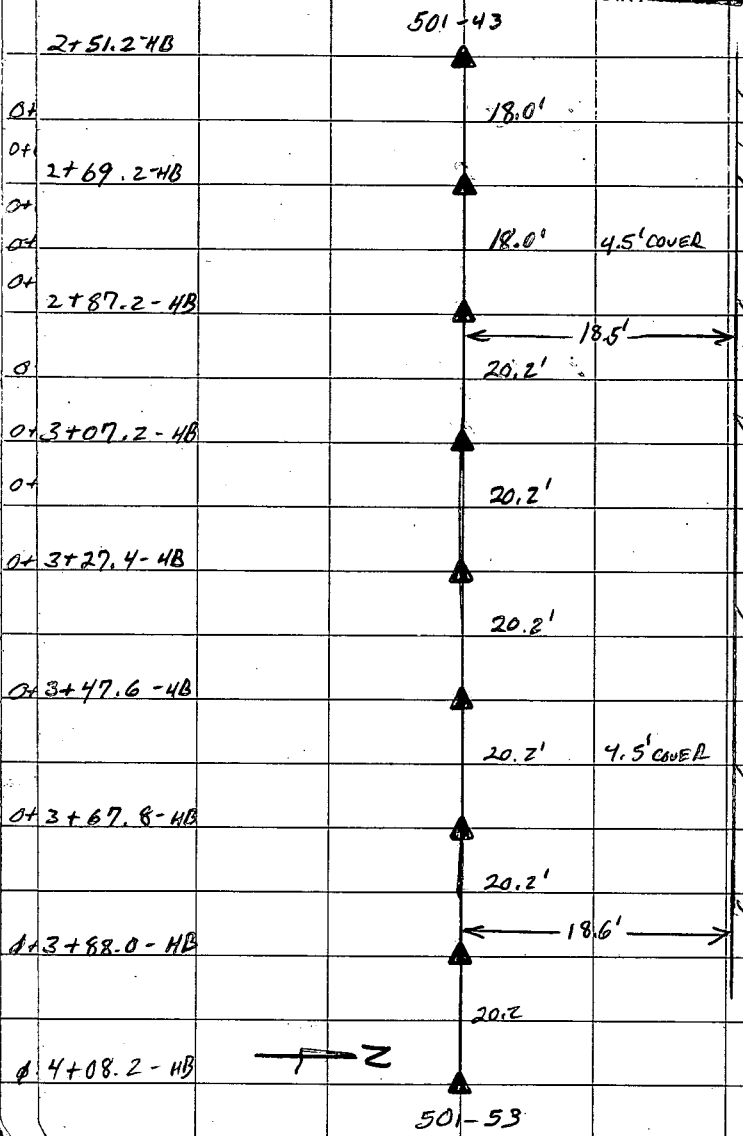
F.B. # 501-48  
DATE 7-1-97 ✓

LOCATION E. HUDSON AVE

RECORDER KEN LINDSAY MISC.

DESCRIPTION NEW 8" WATERMAIN HYDRANT

POSTED 40 400 G.B. - H.B. - V.H. -



8" DUCTILE  
IRON  
PIPE  
PUSH-ON  
JOINT

STREET GENESEE ST

DOMESTIC   
HOLEY   
MAIN 12"  
SERVICE

LOCATION N / ARVINE HTS

CONTRACTOR GORDON PHILLIPS E.B. # 501-49

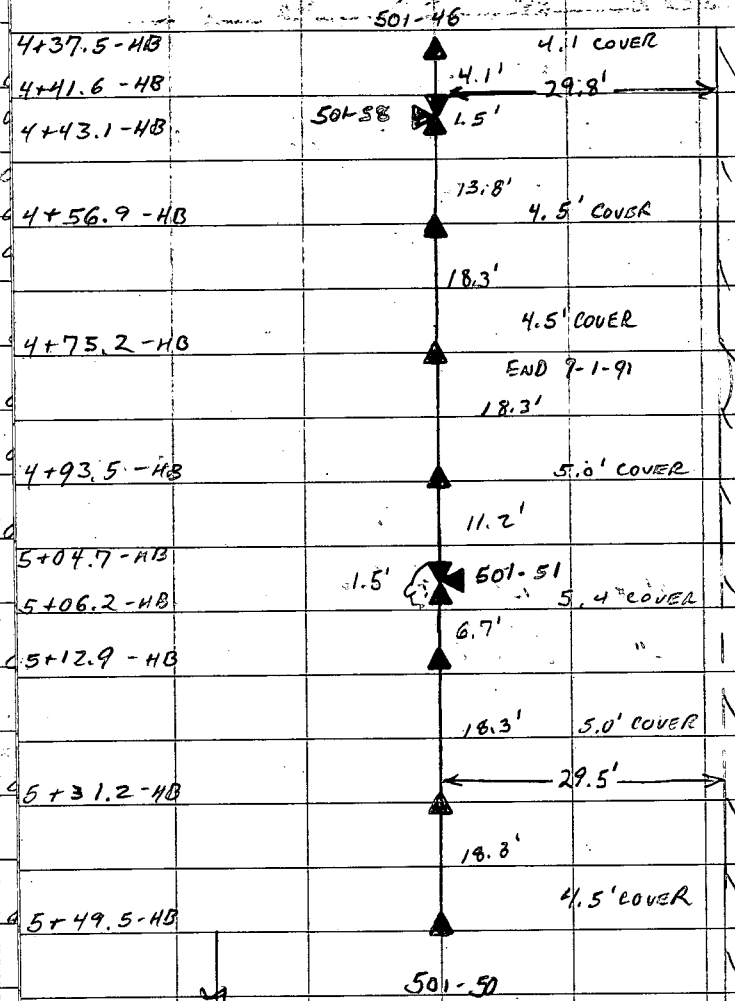
INSPECTOR KEN LINDSAY DATE 7-1-91

DESCRIPTION NEW 12" WATERMAIN

HYDRANT

RECORDER KEN LINDSAY MISC.

POSTED 40 Gm 400 Gm G. B. - H. B. - V. R. -



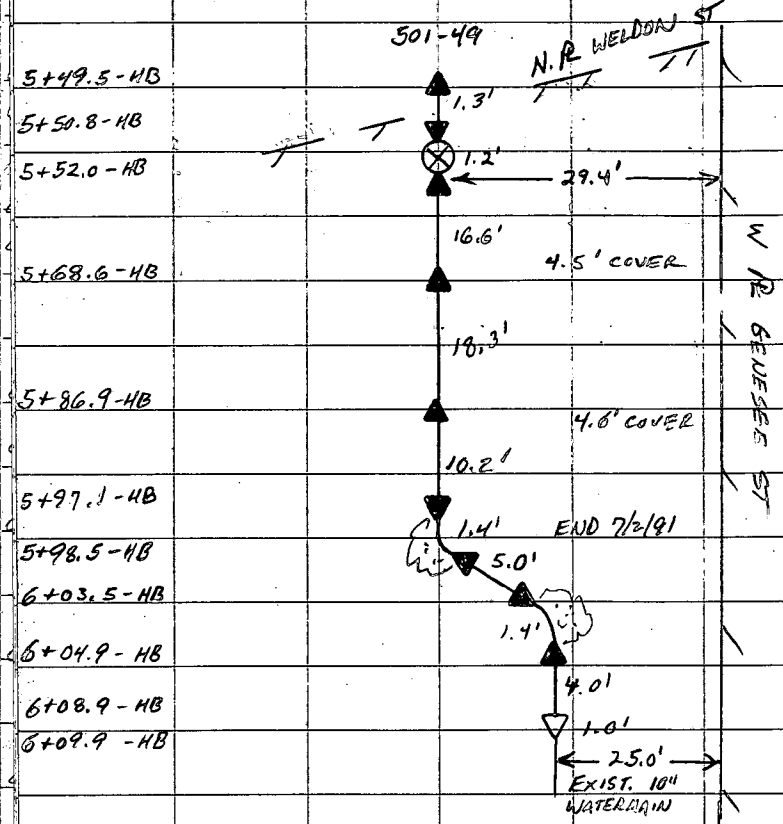
N E GENESEE ST



12" D.I.P (PE + PE)  
 12" x 8" x 12" TEE (MJ + MS)  
 12" D.I.P (PE + HUB)  
 12" D.I.P (PE + PE)  
 12" x 8" x 12" TEE (MJ + M.S.)  
 12" D.I.P. (PE + HUB)

STREET GENESEE ST DOMESTIC   
 LOCATION N/WELDON ST HOLLY   
 DESCRIPTION NEW 12" WATERMAIN HYDRANT

CONTRACTOR GORDON PHILLIPS F. B. # 501-50 ✓  
 INSPECTOR KEN LINDSAY DATE 7-2-91  
 RECORDER KEN LINDSAY MISC. \_\_\_\_\_  
 POSTED 40 SM 400 SM G. B. SM H.B. \_\_\_\_\_ V.R. \_\_\_\_\_



12" D.I.P. (PE + PE)  
 12" GATE VALVE (1990 MET OPEN RT)  
 VALVE COORD. 29.4' E/W P. GENESEE ST  
 3.8' N/N P. WELDON ST  
 12" D.I.P. (PE + HUB)  
 12" D.I.P. (PE + HUB)  
 12" D.I.P. (PE + HUB)  
 12" 45° BEND (MJ + MS)  
 12" D.I.P. (P.E. + P.E.)  
 12" 45° BEND (MJ + M.J.)  
 12" D.I.P. (PE + PE)  
 12" x 10" REDUCER (MJ + MS)  
 EXIST. 10" WATERMAIN



STREET WELDON ST

DOMESTIC   
MILLY   
MAIN SERVICE 8"  
SERVICE 8"

LOCATION W / GENESEE ST

CONTRACTOR GORDON PHILLIPS F. B. # 501751

INSPECTOR KEN LINDSAY

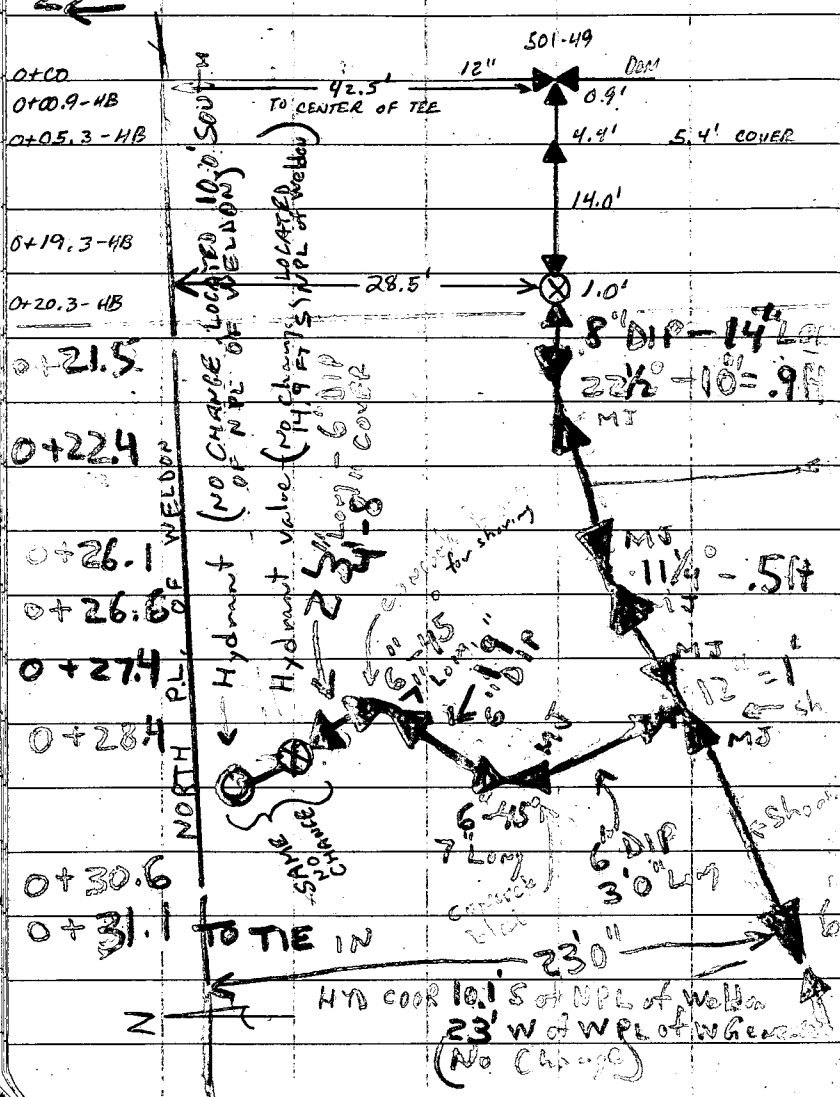
DATE 7-2-91

DESCRIPTION NEW 8" WATERMAIN HYDRANT

RECORDER KEN LINDSAY

MISC.

POSTED 40 Am 400 Am G. B. Am H. B. Am V. R.



12" x 8" x 12" TEE

8" D.I.P (PE + HUB)

8" D.I.P (PE + PE)

8" GATE VALVE (1990 MET OPENS RT)

VALVE COORD. 10.9' E/W R GENESEE ST

28.5' S/N R WELDON ST

8" D.I.P - 3' LONG = 3.7 FT  
 Done July 22, 1991 by John Lando  
 I INSPECTED 5 PM with KEVIN JOHNSON

8" D.I.P - 10" LONG = .8 FT

8x6x8 Tee (1 FT LONG)  
 4'9" Cover at Tee. MS all 3 sides

8" D.I.P - 2 1/2" LONG = 2.2 FT

8" TO 6" REDUCER (4'7" COVER)  
 6" LONG = .5 FT

EXISTING 6" PIPE

11' 3" 7' 11" 11' 3"

STREET ARVINE HTS

DOMESTIC ✓  
HOLLY  
MAIN 8"  
SERVICE

LOCATION E/ GENESEE ST

DESCRIPTION NEW 8" WATERMAIN HYDRANT

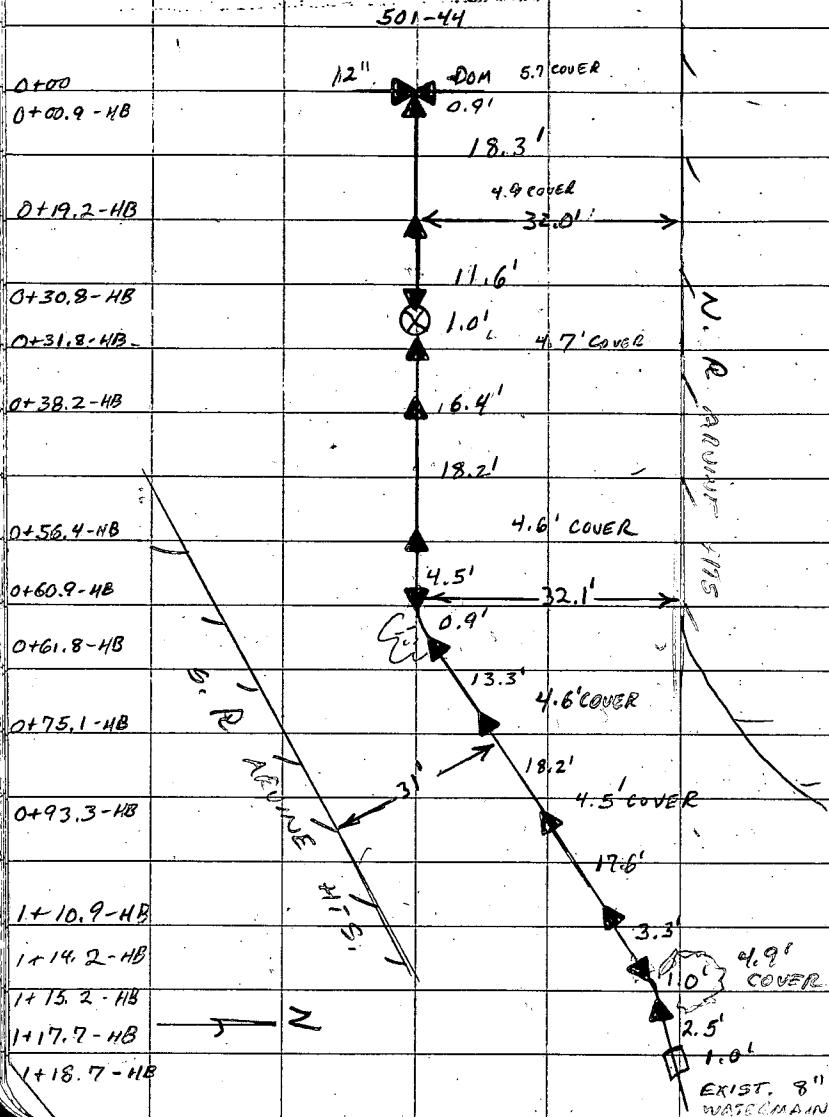
CONTRACTOR GORDON PHILLIPS E.B. #501-52

INSPECTOR KEN LINDSAY

DATE 2-2-91

RECORDER KEN LINDSAY MISC.

POSTED 40 CM 400 CM G. B. CM H.B. V.R.



12" X 8" X 12" TEE

8" D.I.P. (PE + HUB)

8" DIP (PE + PE)

8" GATE VALVE (1991 MET GREEN RT.)

VALUE COORD / 31.9' S/N R ARVINE HTS

0.4' W/E R GENESEE ST.

8" D.I.P. (PE + PE)

8" 22 1/2° BEND (MJ + MJ)

8" D.I.P. (PE + HUB)

8" D.I.P. PUSH-ON JOINT

8" D.I.P. (PE + PE)

8" 22 1/2° BEND (M.J. + M.J.)

8" D.I.P. (PE + PE)

8" SOLID SLEEVE (OVER-SIZE)

EXIST. 8" WATERMAIN

STREET WOODBURY ST

DOMESTIC   
HOLLY   
MAIN 8"  
SERVICE

LOCATION W/ NORTH ST.

DESCRIPTION NEW 8" WATER MAIN HYDRANT

CONTRACTOR VILLASER F.B. # 501-53

INSPECTOR ED. ERP DATE 7-2-91

RECORDER K. LINDSAY MISC. \_\_\_\_\_

POSTED 40 Con 400 Eng. B. H.B. \_\_\_\_\_ V.R. \_\_\_\_\_

4+08.2-HB

501-48

20.2' 4.5' COVER

4+28.4-HB

ENO 7-1-91

20.2' 18.5'

4+48.6-HB

4.5' COVER

20.2'

4+68.8-HB

20.2'

4+89.0-HB

4.5' COVER

19.3'

4+98.3-HB

1.4' 501-01

6.8'

4+99.7-HB

5+06.6-HB

20.2'

5+26.7-HB

18.5'

20.2'

5+46.9-HB

4.6' COVER

20.2'

5+67.1-HB

501-54

8" DUCTILE

IRON

PIPE

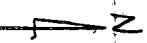
PUSH ON

JOINT

8" X 6" X 8" ANCHOR TEE

8" D. I. P.

N. P. WOODBURY ST



STREET WOODBURY ST

DOMESTIC

CONTRACTOR VILLAGER F. B. # 501-54 ✓

LOCATION W/NORTH ST

HOLLY \_\_\_\_\_

INSPECTOR ED ERB DATE 2-2-91

MAIN 8"

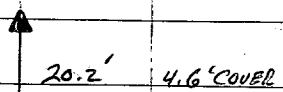
SERVICE \_\_\_\_\_

RECORDER K LINDSAY MISC. \_\_\_\_\_

DESCRIPTION NEW 8" WATERMAIN HYDRANT

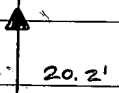
POSTED 40 400 G. B. Gm H.B. \_\_\_\_\_ V.R. \_\_\_\_\_

5+62.1-HB



8" DUCTILE

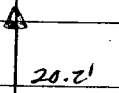
5+87.3-HB



IRON

PIPE

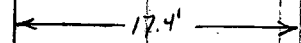
6+07.5-HB



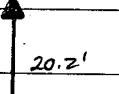
PUSH-ON

JOINT

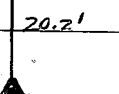
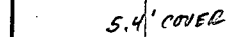
6+27.7-HB



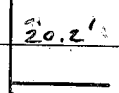
N. E. WOODBURY ST



6+47.9-HB



6+68.1-HB



8" D.I.P. (PE + PE)

8" 11 1/4° BEND (MJ + MJ)

8" DIP (PE + PE)

8" GATE VALVE (MET OPENS RT)

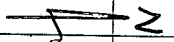
6+88.3-HB



VALUE COORD.

34.9' W/W R NORTH ST  
16.2' S/N R WOODBURY ST

6+89.3-HB



6+90.3-HB



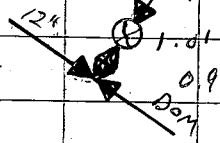
6+94.3-HB



6+95.3-HB

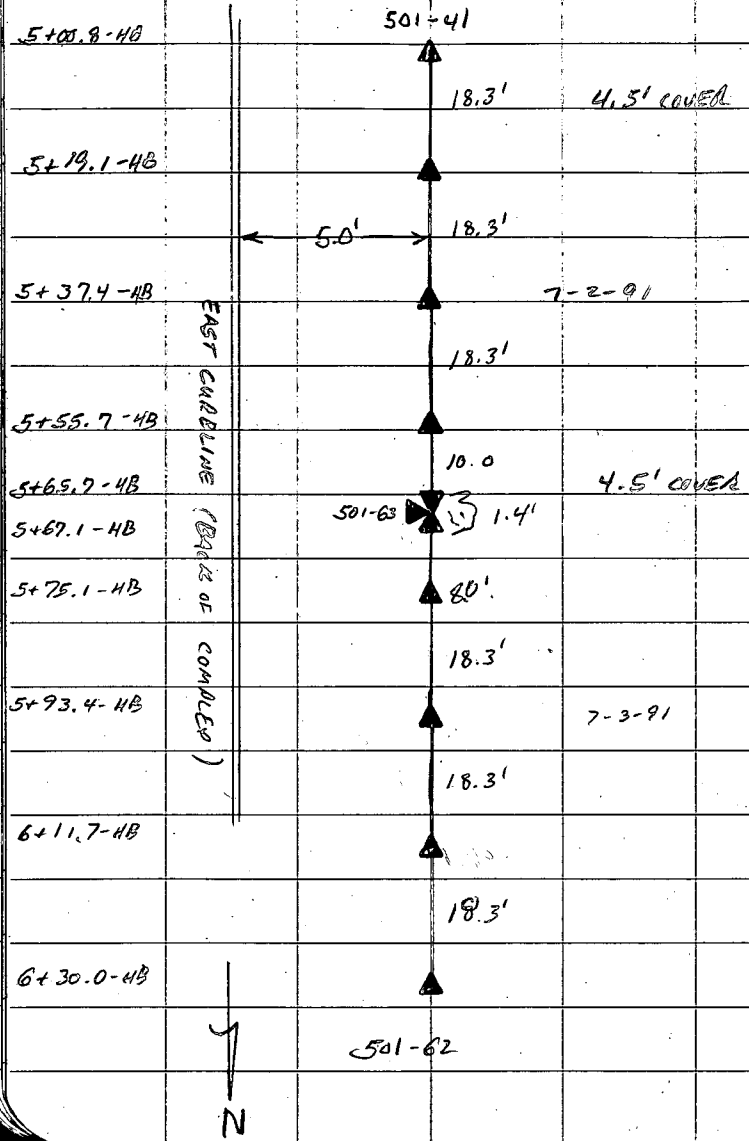


6+96.2-HB



STREET COLFAR ST. DOMESTIC ✓  
 LOCATION BEHIND COLFAR COMPLEX SERVICE ✓  
 DESCRIPTION NEW 8" WATER MAIN HYDRANT ✓

CONTRACTOR R.W.W. F.B. # 501-55 ✓  
 INSPECTOR CALL BRANSON DATE 7-2-91  
 RECORDER R. LINDSAY MISC. \_\_\_\_\_  
 POSTED 40 SM 400 G.B. H.B. V.R.



8" DUCTILE  
 IRON  
 PIPE  
 MECHANICAL  
 JOINT  
 8" D.I.P. (PE + PE)  
 8" x 6" x 8" ANCHOR TEE  
 8" D.I.P (PE + HUB)  
 8" DUCTILE  
 IRON  
 PIPE  
 MECHANICAL JOINT

7-2-91

7-3-91

501-62

B. R. AN PHILLIPS

STREET GENESEE PK BLVD

LOCATION W/GENESEE ST.

DESCRIPTION NEW 12" WATER MAIN HYDRANT

DOMESTIC   
HOLLY 12"  
MAIN SERVICE 71.45

CONTRACTOR GORDON PHILLIPS F. B. # 501-56

INSPECTOR KEN LINDSAY

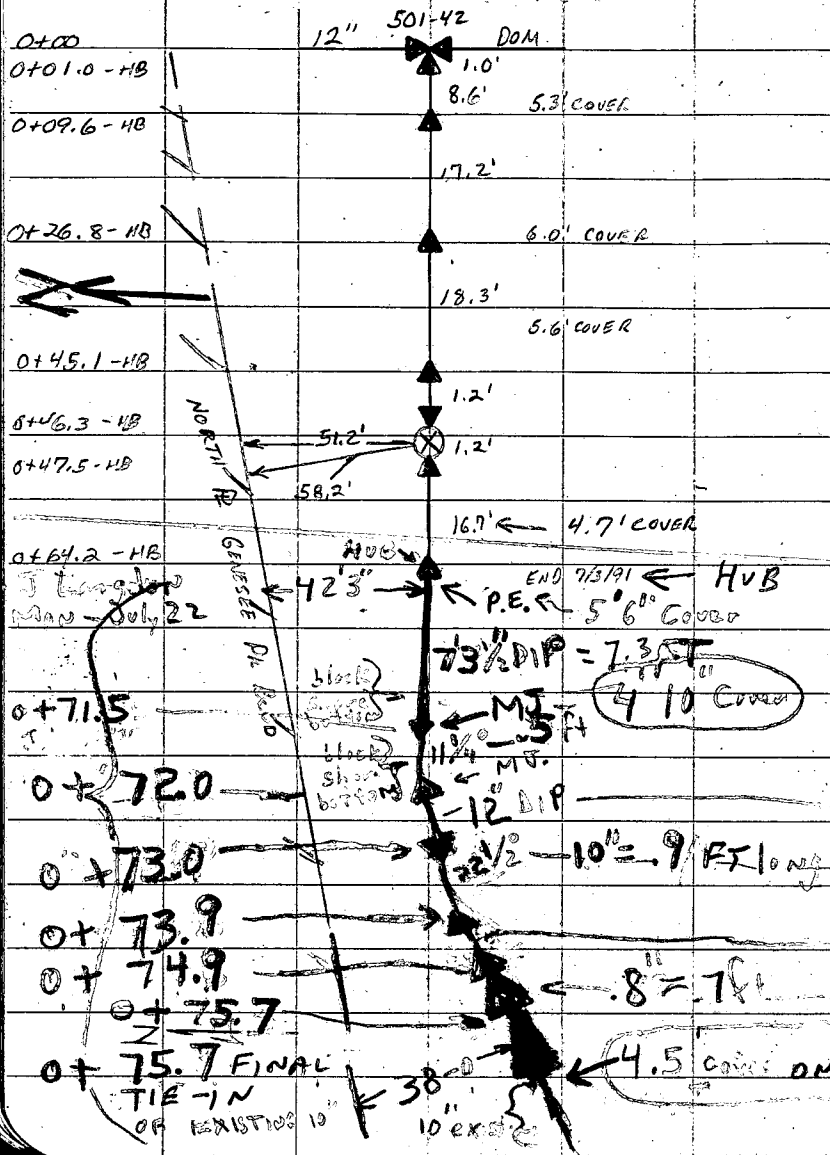
DATE 7-3-91

RECORDER KEN LINDSAY

MISC.

POSTED 40

Gen 400 Gen G. B. Gen H.B. Gen V.R.



12" x 12" x 12" TEE

12" D.I.P. (PE + HUB)

12 DUCTILE

IRON PIPE

PUSH-ON JOINT

12" GATE VALVE (1990 MET OPEN RT)

VALVE COORD / 13.5' W/W R GENESEE ST.

51.2' S/N R GENESEE PK BLVD

Trench See pg 76

12" D.I.P. (PE + HUB) JOHN LINDSAY

7' 3 1/2" OF 12" D.I.P. (PE East side MJ West side)

Curve - 11 1/4" - 12" D.I.P. (MJ both ends)

11" long - 12" D.I.P. (MJ both ends)

Curve - 22 1/2" - 12" CONNECTOR (MJ both ends)

1' 0" FT OF 12" DIP (MJ both ends)

10" MJ TO 12" INCREASER (MJ both ends)

EXISTING MAIN (CAST IRON)

Pressure test at 1 PM - July 22 for tie in with WALT KINEZ

STREET GENESEE ST

DOMESTIC

HOLLY

MAIN

LOCATION 1207 GENESEE ST SERVICE

DESCRIPTION NEW HYD

HYDRANT

~~CONTRACTOR~~ GORDON PHILLIPS F.B. # 501-57

INSPECTOR KEN LINDSAY

DATE 7-3-91

RECORDER KEN LINDSAY

MISC.

POSTED 40

400

G.B.

H.B.

P.V.R.

0+00

0+00.8-HB

0+01.8-HB

0+09.4-HB

0+10.4-HB

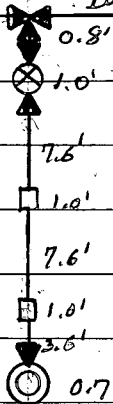
0+18.0-HB

0+19.0-HB

0+22.6-HB

0+23.3-HB

12" 501-45 DOM



4.9' COVER

12" x 6" x 12" ANCHOR TEE

6" GATE VALVE (MET 1991 OPENS RT)

HYD VALVE COORD = 2.2' E/HYD

6" ANCHOR PIPE

6" SOLID SLEEVE

6" ANCHOR PIPE

6" SOLID SLEEVE

6" ANCHOR PIPE

5 1/4" 2 N 1991 U.S. PIPE

HYD COORD: 8.6' E/W R GENESEE ST

56.8' N/W R GENESEE PK BLVD

24

STREET GENESEE ST

LOCATION 1170 GENESEE ST.

DESCRIPTION NEW 8" SERVICE

DOMESTIC   
HOLLY   
MAIN 8"  
SERVICE

HYDRANT

CONTRACTOR GORDON PHILLIPS F. B. # 501-58

INSPECTOR K. LINDSAY

DATE 7-3-91

RECORDER K. LINDSAY MISC.

POSTED 40 SM 400 - G. B. - H. B. - V. R. -

0+00

0+00.9-HB

0+01.9-HB

0+02.9-HB

0+21.1-HB

0+24.0-HB

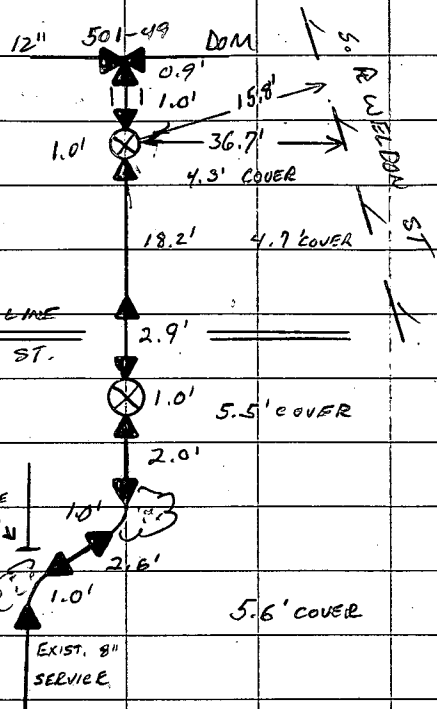
0+25.0-HB

0+27.0-HB

0+28.0-HB

0+30.6-HB

0+31.6-HB



12" x 8" x 12" TEE

8" STUB (PE + PE) RODDED

8" GATE VALVE (1989 MET OPENS RT)

VALUE COORD. 32.1' E/W OF GENESEE ST

15.8' S/S OF WELDON ST.

8" D.I.P. (PE + HUB)

8" D.I.P. (PE + PE)

8" GATE VALVE / 249.1' N/W OF ARVINE HTS

10.9' W/E OF GENESEE ST

8" D.I.P. (PE + P.E)

8" 45° BEND (MJ + M.J.)

8" D.I.P. (P.E. + P.E)

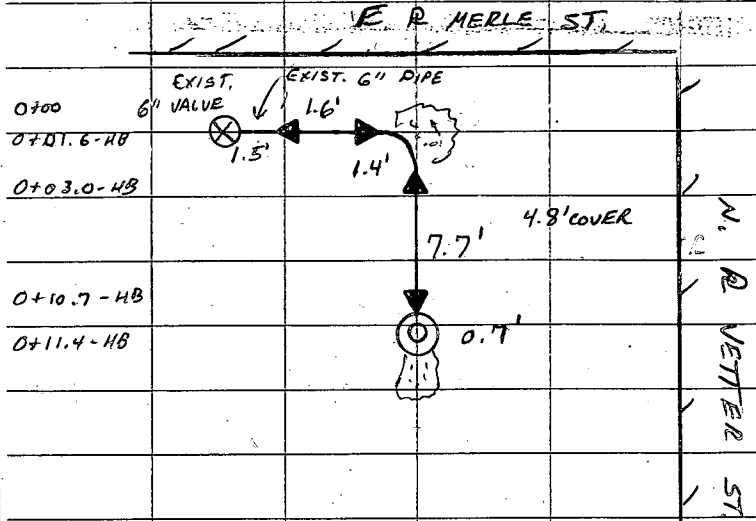
8" 45° BEND (M.J. + M.J.)

EXIST. 8" SERVICE

137007

STREET VETTER ST DOMESTIC HOLLY  
 LOCATION ACROSS FROM #3 VETTER ST. SERVICE MAIN SERVICE  
 DESCRIPTION NEW HYD. HYDRANT

CITY SILVERCREST F.B. # 501-59 ✓  
 INSPECTOR JOHN ELKINS DATE 7-3-91  
 RECORDED KEN LINDSAY MISC. \_\_\_\_\_  
 POSTED SM 400 G.B. SM H.B. SM V.R. SM



- 6" SOLID SLEEVE
  - 6" 90° BEND
  - 6" ANCHOR PIPE
  - 5 1/4" 2N 1991 U.S. PIPE
- HYD COORD. 7.7' S/N R VETTER ST.  
11.0' E/E MERLE ST

EXIST. HYD VALVE COORD.:

- 2.4' E/E R MERLE ST.
- 11.8 S/N R VETTER ST.

↑ N

STREET WOODBURY ST

LOCATION ACROSS FROM 127 WOODBURY

DESCRIPTION NEW HYD

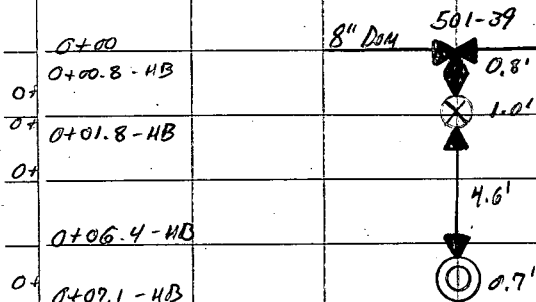
DOMESTIC \_\_\_\_\_  
HOLLY \_\_\_\_\_  
MAIN \_\_\_\_\_  
SERVICE \_\_\_\_\_  
HYDRANT ✓

CONTRACTOR VILLAGER F. B. # 501-60 ✓

INSPECTOR ED ERB DATE 7-8-91

RECORDER KEN LINDSA MISC. \_\_\_\_\_

POSTED 40 SM 400 SM G. B. SM H. B. SM V. R. I



8" x 6" x 8" ANCHOR TEE

6" GATE VALVE (MET OPENS RT)

VALVE COORD 5.5' S/HYD.

6" ANCHOR PIPE

5/4" 2N (US PIPE 1991)

HYD COORD

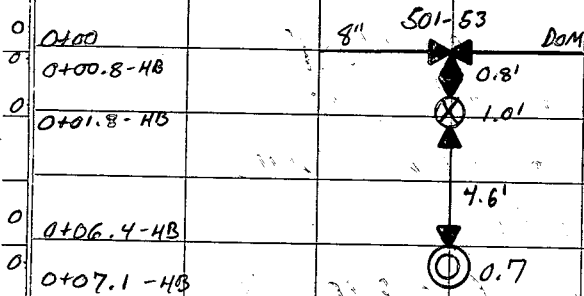
216.5' E/E R HUDSON AVE
8.4' S/N R WOODBURY ST



STREET Woodbury ST  
 LOCATION 168 Woodbury ST  
 DESCRIPTION NEW HYDRANT

DOMESTIC ✓  
 HOLLY \_\_\_\_\_  
 MAIN \_\_\_\_\_  
 SERVICE \_\_\_\_\_  
 HYDRANT ✓

CONTRACTOR VILLAGER F. B. # 501-62 ✓  
 INSPECTOR ED ERD DATE 7-8-91  
 RECORDER KEN LINDSAY MISC. \_\_\_\_\_  
 POSTED 40 EM 400 EM G. B. EM H.B. EM V.R. \_\_\_\_\_



8" x 6" x 8" ANCHOR TEE  
 6" GATE VALVE (MET OPENS RT)  
 HYD. VALVE COORD 5.8' S/HVD  
 6" ANCHOR PIPE  
 5 1/4" 2N (U.S PIPE 1991)  
 HYD COORD. 163.3' W/W R NORTH ST  
 10.6' S/N R WOODBURY ST



STREET COLFAX ST (#210)

DOMESTIC ✓  
HOLLY  
MAIN 8"  
SERVICE

LOCATION BEHIND COLFAX ST COMPLEX

DESCRIPTION NEW 8" WATER MAIN

HYDRANT

CONTRACTOR RWW

F. B. # 501-621173

INSPECTOR CARL BRADON

DATE 7-8-81

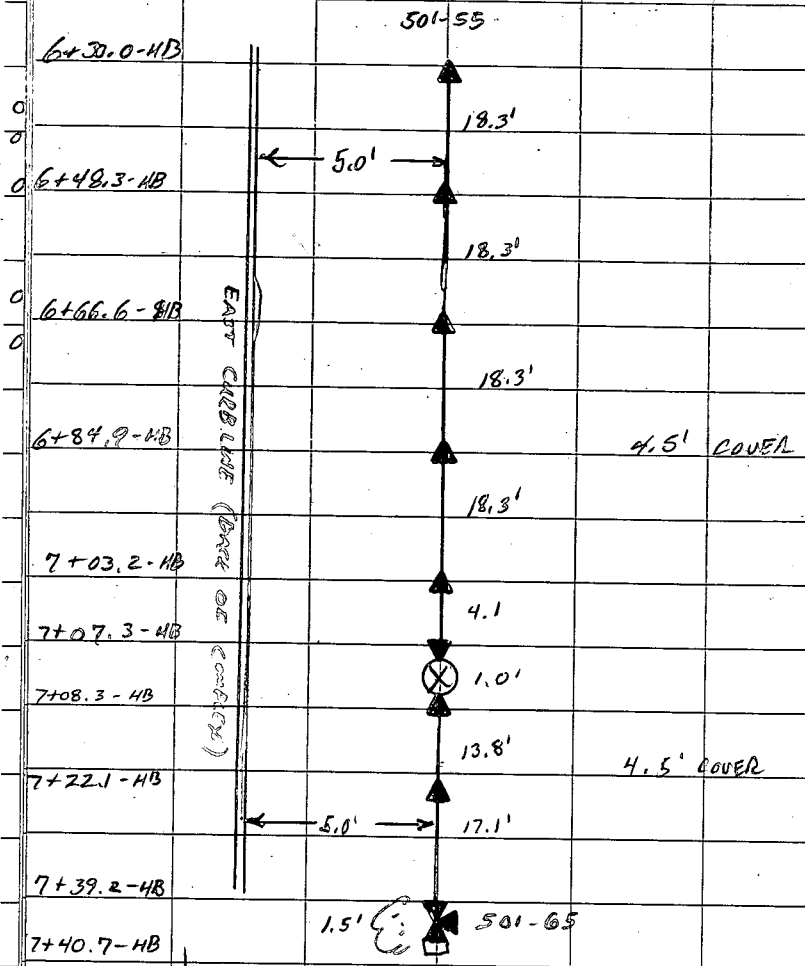
RECORDER K. LINDSEY

MISC.

POSTED 40

400 G. B. SA

H.B. V.R.



8" DUCTILE

IRON

PIPE

MECHANICAL - JOINT

8" GATE VALVE (MET OPENS RT)

VALVE COORD 5.0' W/E CURBLINE (COMPLEX)

32.1'S/S CURBLINE (N. SIDE OF COMPLEX)

8" D.I.P. (PE + HUB)

8" D.I.P. (PE + PE)

8" x 8" x 8" TEE

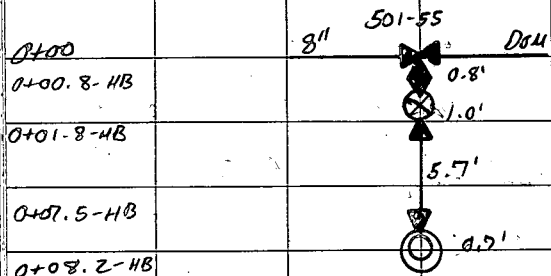
8" PLUG (N. END)

STREET 210 COLFAX ST  
 LOCATION BEHIND COMPLEX  
 DESCRIPTION NEW HYD.

DOMESTIC \_\_\_\_\_  
 HOLLY \_\_\_\_\_  
 MAIN \_\_\_\_\_  
 SERVICE \_\_\_\_\_

HYDRANT

CONTRACTOR R.W.W. F. B. # 501-63  
 INSPECTOR CALL BRANDON DATE 9-8-91  
 RECORDER K. LINDSAY MISC. \_\_\_\_\_  
 POSTED 40 GM 400 \_\_\_\_\_ G. B. \_\_\_\_\_ H. B. \_\_\_\_\_ V. R. \_\_\_\_\_



8" X 6" X 8" ANCHOR TEE  
 NEW 6" GATE VALVE (MET OPENS RT)  
 HYD VALVE COORD. 6.9' W / HYD.  
 6" ANCHOR PIPE  
 5 1/4" 2N US PIPE 1991  
 HYD COORD. 3.2' E/E CURBLINE  
 179.0' N/S CURBLINE



STREET COUNCIL ST

DOMESTIC ✓

LOCATION W./MILLER ST

HOLLY

DESCRIPTION NEW 8" WATERMAIN

MAIN 8"

SERVICE

HYDRANT

CONTRACTOR VILBERGER

F. B. # 501-64 ✓

INSPECTOR ED GAB

DATE 7-10-91

RECORDER KEN LINDSAY

MISC.

POSTED 40

400

G. B.

H. B.

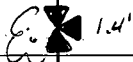
V. R.

1+25.6-HB

501-47

12.7'

1+38.3-HB



1.4'

1+39.7-HB

7.7'

11.5'

1+47.4-HB

20.2'

4.5' COVER

S. SIDE COUNCIL ST

1+67.6-HB

20.2'

1+87.8-HB

20.2'

2+08.0-HB

20.2'

4.3' COVER

2+29.2-HB

20.2'

2+48.4-HB

20.2'

2+68.6-HB

20.2'

11.4'

501-67

8" D.I.P. (PE + PE)

8" X 6" X 8" ANCHOR PIPE

8" P.I.P. (PE + HUB)

8" DUCTILE

IRON

PIPE

PUSH-ON

JOINT

STREET 211 COLFAX ST

LOCATION N. side of COLFAX SERVICE

DESCRIPTION NEW 8" WATERMAIN HYDRANT

501-62

7+40.7 - HB

7+41.5 - HB

7+59.8 - HB

7+68.9 - HB

7+69.9 - HB

7+88.2 - HB

7+98.3 - HB

7+99.7 - HB

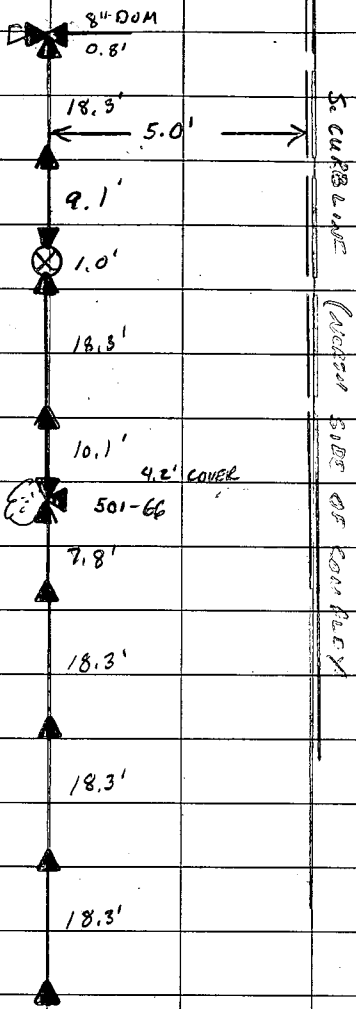
8+08.5 - HB

8+26.8 - HB

8+45.1 - HB

8+63.4 - HB

501-70



S. CURBLINE

(NORTH SIDE OF COLFAX)



DOMESTIC ✓  
HOLLY  
MAIN #2

CONTRACTOR RWC F. B. # 501-65 ✓

INSPECTOR CARL BRADON DATE 7-10-91

RECORDER REN LINDSAY MISC.

POSTED 40 SM 400 SM G. B. — H.B. — V.R. —

8" x 8" x 8" TEE

8" D.I.P. (PE + HUB)

8" D.I.P. (PE - PE)

8" GATE VALVE (MET OPENS RT)

VALVE COORD 5.0' N/S CURBLINE NORTH SIDE OF COMPLEX  
33.7' W/E CURBLINE BACK OF COMPLEX

8" D.I.P. (PE + HUB)

8" D.I.P. (PE + PE)

8" x 6" x 8" ANCHOR TEE

8" D.I.P. (PE + HUB)

8" DUCTILE

IRON

PIPE

MECHANICAL

JOINT

STREET 210 COLFAX ST

LOCATION N/SIDE COLFAX ST COMPLEX

DESCRIPTION NEW HYD

DOMESTIC \_\_\_\_\_  
 HOLLY \_\_\_\_\_  
 MAIN \_\_\_\_\_  
 SERVICE \_\_\_\_\_  
 HYDRANT

CONTRACTOR RAWW

S.B. # 501-66 ✓

INSPECTOR CARL BRANDON

DATE 7-11-91

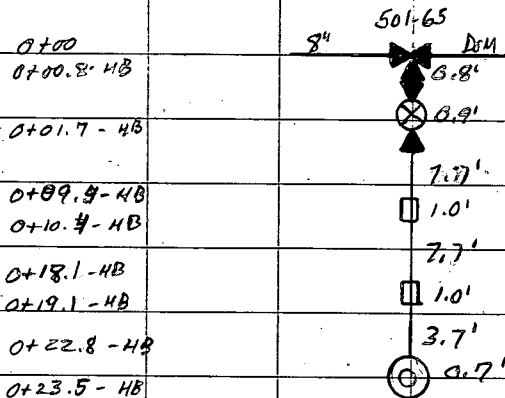
RECORDER REN LINDSAY MISC.

POSTED 40 SM 400

G. B.

H. B.

V. R.



8" x 6" x 6" ANCHOR TEE

6" GATE VALVE (MET OPENS RT)

HYD VALVE COORD - 22.2' N/HYD

6" ANCHOR PIPE

6" SOLID SLEEVE

6" ANCHOR PIPE

6" SOLID SLEEVE

6" ANCHOR PIPE

5 1/4" 2N (U.S. PIPE 1991)

HYD COORD

19.1' S/S CURBLINE

+ 9.1' N/WALL OF BUILDING

0.5' E/E WALL (BACK) OF

BUILDING

N  
↑

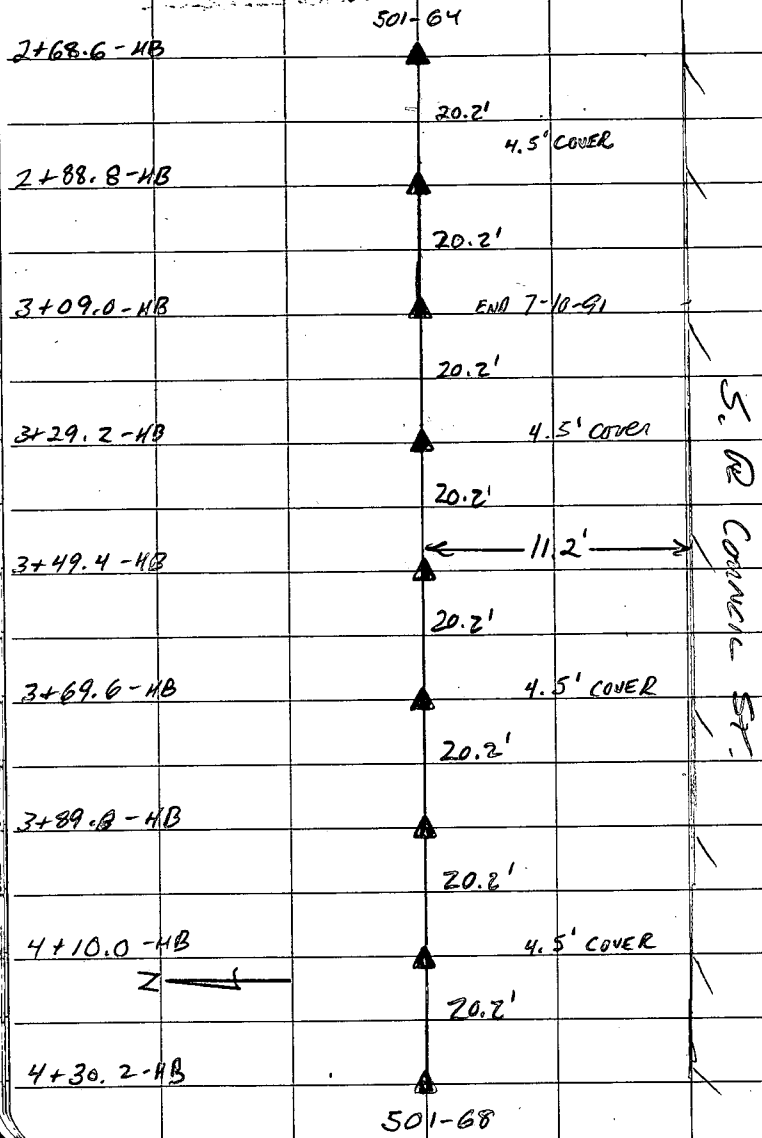
STREET COUNCIL ST

LOCATION E/ROCKLAND AVE

DESCRIPTION NEW 8" WATERMAIN

DOMESTIC  WATER  
HOLLY 8" WATERMAIN  
MAIN 8" WATERMAIN  
SERVICE 8" WATERMAIN  
HYDRANT 8" WATERMAIN

CONTRACTOR VILLAGER F.B. # 501-67 ✓  
INSPECTOR ED ERB DATE 7-11-91  
RECORDER KEN LINDSAY MISC. \_\_\_\_\_  
POSTED 40 500 500 G.B. \_\_\_\_\_ H.B. \_\_\_\_\_ V.R. \_\_\_\_\_



8" DUCTILE  
IRON  
PIPE  
PUSH-ON  
JOINT

STREET COUNCIL ST

LOCATION E / PORTLAND AVE

DESCRIPTION NEW 8" Watermain

DOMESTIC ✓  
HOLLY \_\_\_\_\_  
MAIN 8" \_\_\_\_\_  
SERVICE \_\_\_\_\_

HYDRANT \_\_\_\_\_

4+30.2-HB

4+35.5-HB

4+36.9-HB

4+52.2-HB

4+72.4-HB

4+92.6-HB

5+12.8-HB

5+33.0-HB

5+53.2-HB

5+73.4-HB

501-69

5.3'

4.5' cover

1.4'

501-71

15.3'

11.0'

20.2'

4.8' cover  
END 7/11/91

20.2'

20.2'

20.2'

20.2'

11.0'

20.2'

4.5' COVER

501-69

S  
E  
C  
O  
U  
N  
C  
I  
L  
S  
T.



CONTRACTOR WILLAGER

F. B. # 501-68

INSPECTOR ED ERB

DATE 7-11-91

RECORDER KEN LINDSAY MISC.

POSTED 400 400 G. B. H.B. V.R.

8" D.I.P (P.E. + P.E.)

8" x 6" x 8" ANCHOR TEE

8" D.I.P. (PE + HUB)

8" Ductile

IRON

PIPE

Push-on

JOINT

STREET COUNCIL ST

DOMESTIC

HOLLY

MAIN

SERVICE

LOCATION E/ PORTLAND AVE

DESCRIPTION NEW 8" WATERMAIN

HYDRANT

CONTRACTOR VILLAGER

F. B. # 501-69

INSPECTOR ED ERB

(CLARK ENG.)

DATE 7-12-91

RECORDER KEN LINDSAY

MISC.

POSTED 40

CON 400 CON

G. B.

H.B.

V.R.

5+73.4-HB

501-68

20.2'

5+93.6-HB

4.5' COVER

20.2'

6+13.8-HB

END 7-12-91

20.2' 5.0' COVER

6+34.0-HB

E. PE PORTLAND

END 7-12-91

13.0'

6+47.0-HB

1.0'

6+48.0-HB

1.0'

6+49.0-HB

6.0'

6.0' COVER

6+55.0-HB

6+59.0-HB

4.0'

6+60.0-HB

1.0'

1.0'

6+62.8-HB

2.8'

0.5'

50.5-12

Z → S

8" DUCTILE

IRON

PIPE

PUSH-ON

JOINT

8" D.I.P (PE + PE)

8" 45° BEND (M.J + M.J)

8" D.I.P (PE + HUB)

8" D.I.P (PE + HUB)

8" D.I.P (PE + PE)

8" 45° BEND (M.J. + M.J.)

8" D.I.P (PE + HUB)

STREET 210 COLFAX ST

LOCATION N. SIDE OF COMPLEX

DESCRIPTION NEW 8" WATERMAIN

DOMESTIC

HOLLY

MAIN 8"

SERVICE

HYDRANT

CONTRACTOR REW

F. B. # 501-70

INSPECTOR CARL BRANDON

DATE 7-15-91

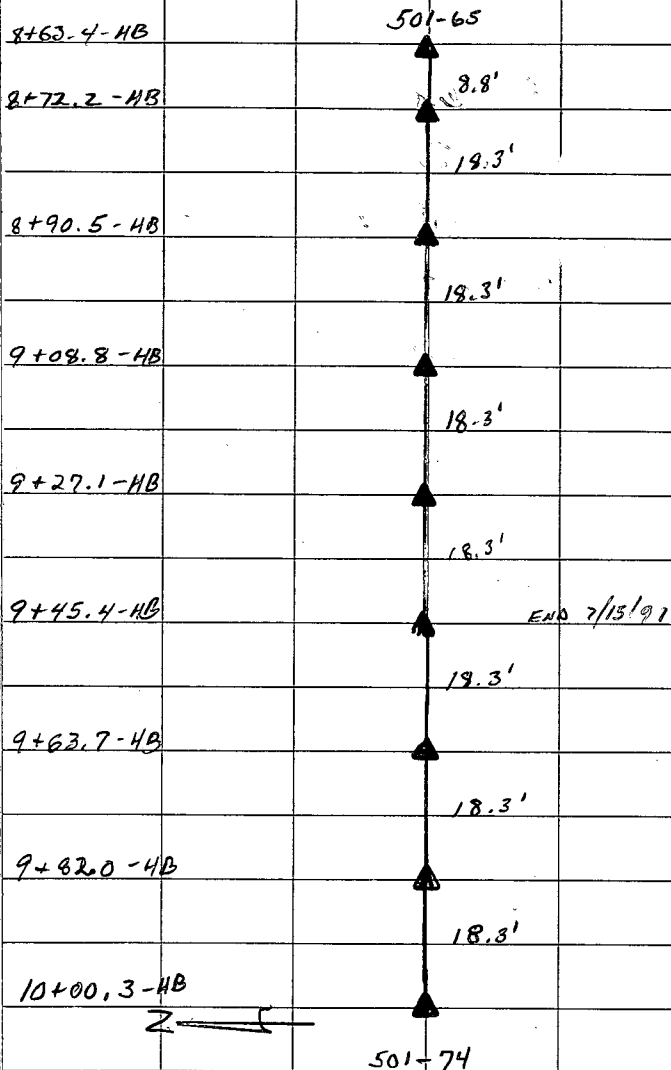
RECORDER KEN LINDSAY MISC.

POSTED 40 CON 400 CON

G. B.

H. B.

V. R.



501-65

8.8'

19.3'

19.3'

18.3'

18.3'

19.3'

18.3'

18.3'

501-74

S. CARBINE

(NORTH SIDE OF COMPLEX)

8" DUCTILE

IRON

PIPE

MECHANICAL

JOINT

END 7/13/91

CONTRACTOR VILLAGER F. B. # 501-71

INSPECTOR EDERB DATE 7-16-91 ✓

RECORDER KEN LINDSAY MISC.

POSTED 40 Am 400 Am G. B. Am H. B. Am V. R. —

STREET COUNCIL ST

DOMESTIC

HOLLY

MAIN

SERVICE

HYDRANT ✓

LOCATION E / PORTLAND AVE

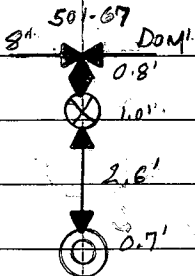
DESCRIPTION NEW HYD

0+00  
0+00.8-HB

0+01.8-HB

0+04.4-HB

0+05.1-HB



8" x 6" x 8" ANCHOR TEE

6" GATE VALVE (MET OPEN RT)

HYD VALVE COORD 3.9' N/HYD

6" ANEMOR PIPE

5 1/4" 2N (US PIPE 1991)

HYD COORD 6.8' N/S PL COUNCIL ST.

220.5' E/E PL PORTLAND AVE



STREET COUNCIL ST

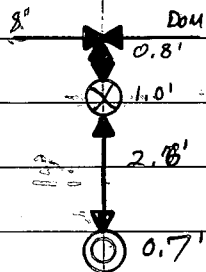
LOCATION W/ MILLER ST

DESCRIPTION NEW HYD.

DOMESTIC \_\_\_\_\_  
HOLLY \_\_\_\_\_  
MAIN \_\_\_\_\_  
SERVICE \_\_\_\_\_  
HYDRANT

CONTRACTOR VILLAGER F. B. # 501-72 ✓  
INSPECTOR ED ERB DATE 7-16-91  
RECORDER KEN LINDSAY MISC. \_\_\_\_\_  
POSTED 40: 5m 400: 5m G. B. 5m H.B. 5m V.R. \_\_\_\_\_

0+00  
0+00.8-HB  
0+04.8-HB  
0+04.4-HB  
0+05.1-HB



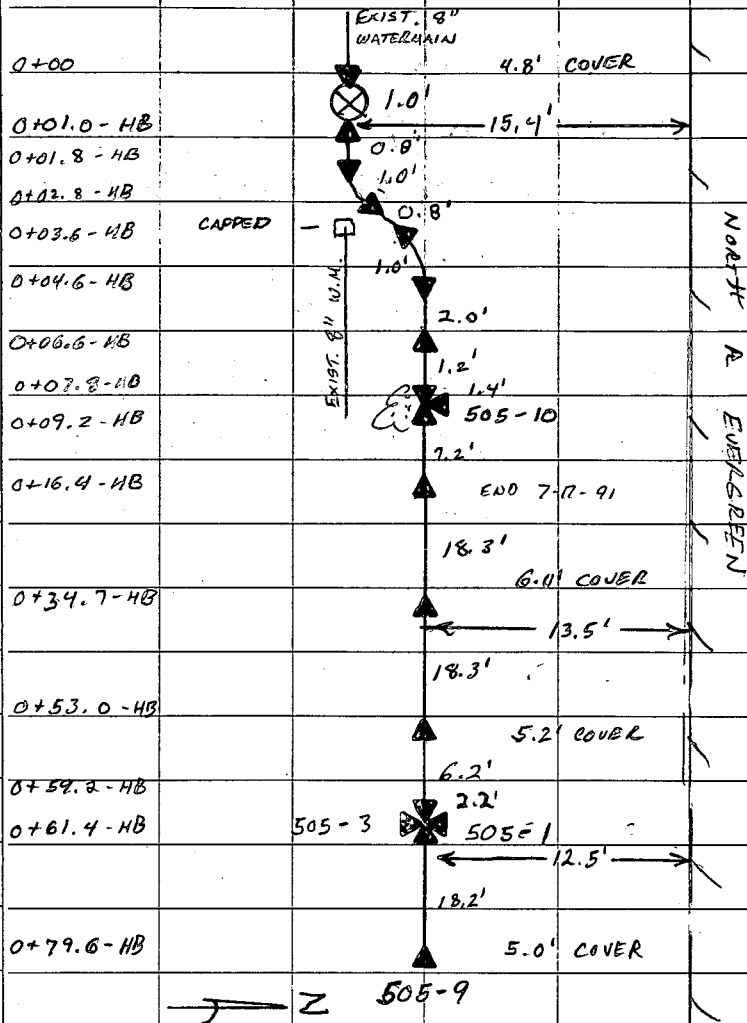
8" x 6" x 8" ANCHOR TEE  
6" GATE VALVE (MET OPENS RT)  
HYD VALVE COORD 4.0' N/HYD  
6" ANCHOR PIPE  
5 1/4" 2N (US PIPE 1991)  
HYD COORD: 6.9' N/S R COUNCIL ST  
112.0' W/W R MILLER ST.



STREET ~~EVERGREEN ST.~~DOMESTIC  ~~WATERMAIN~~  
HOLLY   
MAIN  ~~SIP~~  
SERVICE 

LOCATION W/ CONKEY AVE

DESCRIPTION NEW 8" WATERMAIN HYDRANT

CONTRACTOR GORDON PHILLIPS F. B. # 501-73 ✓  
CITY OF ROCHESTER  
INSPECTOR LUIS RODRIGUEZ DATE 7-17-91  
RECORDER K. LINDSAY MISC. \_\_\_\_\_  
POSTED 40 EM 400 EM G. B. EM H.B. \_\_\_\_\_ V.R. \_\_\_\_\_

EXISTING 8" WATERMAIN

8" GATE VALVE (MET 1991 OPENS RT)

VALVE COORD: 15.4'S/N R EVERGREEN

20.2' W/W R CONKEY

8" D.I.P. (P.E. + P.E.)

8" 45° BEND (MJ + MJ)

8" D.I.P. (P.E. + P.E.)

8" 45° BEND (MJ. + M.J.)

8" D.I.P. (P.E. + HUB)

8" D.I.P. (P.E. + P.E.)

8" x 8" CROSS (MJ. + MJ.)

8" D.I.P. (P.E. + HUB)

STREET 210 COLFAX ST

LOCATION N. SIDE OF COMPLEX

DESCRIPTION NEW 8" WATERMAIN

DOMESTIC

HOLLY

MAIN

SERVICE

HYDRANT

8"  
8"  
8"  
8"

501-70

10+00.3 - HB

18.3' 4.5' COVER

10+18.6 - HB

18.3'

10+30.9 - HB

18.3'

5.0'

10+58.2 - HB

18.3'

4.5' COVER

10+73.5 - HB

END 7-17-91

18.3'

10+91.8 - HB

18.3'

11+10.1 - HB

13.1'

11+23.2 - HB

1.4'

501-75

11+24.6 - HB

4.8'

11+29.4 - HB

501-21

END 7-18-91

5.0' CURBLINE N. SIDE OF COMPLEX

CONTRACTOR R.W.L.W F.B. # 501-74  
INSPECTOR CARL BRANDON DATE 7-12-91  
RECORDER KEN LINDSAY MISC. \_\_\_\_\_  
POSTED 40 SM 400 SM G.B. \_\_\_\_\_ H.B. \_\_\_\_\_ V.R. \_\_\_\_\_

8" DUCTILE  
IRON  
PIPE

MECHANICAL

JOINT

8" D.I.P. (P.E. + P.E.)

8" x 6" x 8" TEE

8" D.I.P. (P.E. + HUB)

STREET 210 COLFAX ST.

LOCATION N. SIDE OF COMPLEX

DESCRIPTION NEW HYDRANT

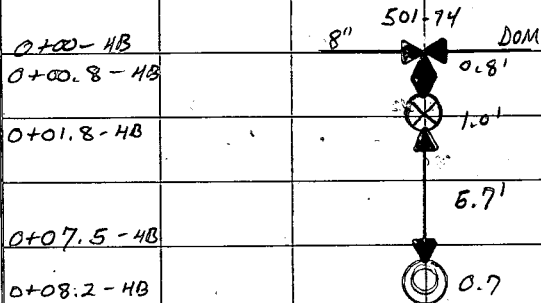
DOMESTIC  
HOLLY  
MAIN  
SERVICE  
HYDRANT ✓

CONTRACTOR R. W. W. F. B. #501-75

INSPECTOR CARL BRANDON DATE 7-18-91 ✓

RECORDER KEN LINDSAY MISC.

POSTED 48 500 400 G. B. - H.B. V.R.



8" x 6" x 8" ANCHOR TEE

6" GATE VALVE (MET 1986 OPENS RT)

HYD VALVE COORD: 6.7' N/HYD

6" D.I.P.

5 1/4" 2N (U.S. PIPE 1991)

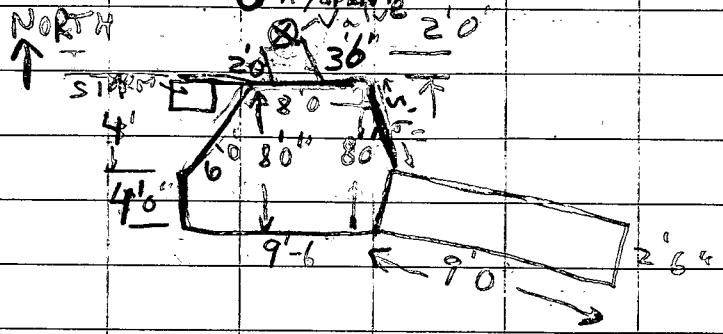
HYD COORD: 3.2' S/S CURBLINE

73.8' E/E CURBLINE COLFAX ST.

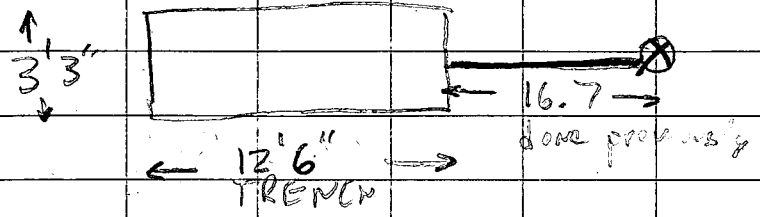


STREET Genesee St DOMESTIC X  
 LOCATION Weldon Tie HOLLY \_\_\_\_\_  
 DESCRIPTION Trench Size MAIN SERVICE \_\_\_\_\_  
 HYDRANT \_\_\_\_\_

CONTRACTOR Gordon Phillips P.F. B. # 501-76  
 INSPECTOR J Langdon DATE 7-23-91  
 RECORDER K. Lynch MISC. \_\_\_\_\_  
 POSTED 40 \_\_\_\_\_ 400 \_\_\_\_\_ G.B. \_\_\_\_\_ H.B. \_\_\_\_\_ V.R. \_\_\_\_\_



Genesee St & Genesee Park Blvd  
Tie in for new main. ✓



7'6" CURB REPLACEMENT  
needed to storm catch basin

To install 75.7-642 =  
11.5 FT OF PIPE AT Genesee

ROUND TO 8' x 8' & 2.5' x 9' TRENCH.  
PIPE installed: Hydrant 3.0 + .6' + 1.8 + .6'  
2.3 = 8.3 FT of Main 31.1 - 20.3 = 10.8 FT  
OF PIPE AT WELDON & GENESSEE  
ST, THE ABOVE TRENCH WAS  
NEEDED. J LANGDON 7-23-1991

St & Genesee Park Blvd  
the above trench was  
needed. J. Langdon 7-23-1991  
Reference page 501-56

Reference page 501-51

Total Linear ft = 19.1 FT

Total Linear ft = 11.5 FT

STREET Genesee St

LOCATION 1157 Service

DESCRIPTION

DOMESTIC

HOLLY

MAIN

SERVICE

HYDRANT

CONTRACTOR BRIAN PHILLIPS F.B. # 501-77

INSPECTOR

DATE 7-23-1991

RECORDER JOHN LANGDON MISC. 311

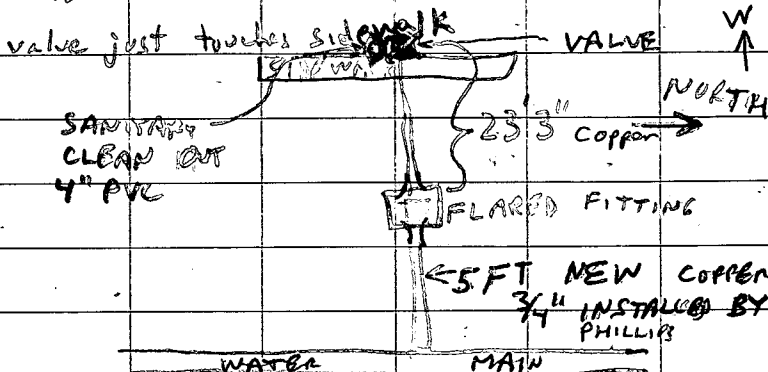
POSTED 40 400 G.B. H.B. V.R.

1157 GENESEE ST. : (WEST SIDE)

west side  
is the first house

of the street and  
North of Walden

1145 Genesee Street is 2nd House  
North of Walden St on West Side of Street.  
Low pressure reported



at 1145 Genesee Street

and meter shop contacted  
for pressure check. Meter Shop  
also to check # 1157 Genesee St

1160 Genesee St:

Meter Pit at 1160

Genesee Street removed and  
a new one must be installed per

Mike Bushhart. The old service had 3 Ft

copper tied into lead. The lead

broke when the Chinese fingers

were used to pull the new

copper service through. CONTRACTOR

HIT CLAY SANITARY LATERAL

& ELECTRICAL CONDUIT WHILE

TRYING TO LOCATE WHERE

SIDEWALK NOT DISTURBED

Did not use blow off but tapped

a new service in the MAIN. Excavated

street for 5ft of copper that was installed.

New Curb box & curb valve

Repaired - replaced placed new  
4" PVC coupling for sanitary  
cleanout which is 9" next to  
curb box

STREET Genesee St

LOCATION 1160 Castened

DESCRIPTION

Sewer lateral repaired with Hydrant Clay tile (ball ended)

THE "PULL" BREAK OCCURRED.

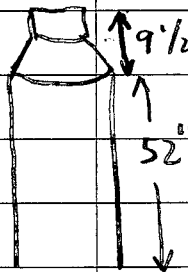
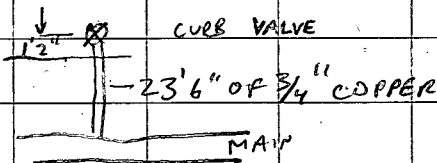
FINALLY BRIAN HAD HIS CROW

BORE UNDER THE ROAD FOR THE

COPPER SERVICE TIE IN.

1160 GENESSEE

N ← ↑ E



STEEL CAP COVER HAD FROST BARRIER

52" Plastic Meter Pit  
House Number 1160  
Meter pit is located

on P.L. between

House 1160 & 1152  
which is the next  
house to the north.

← 19 1/2"

1160 Meter Pit is 19 1/2 FT WEST OF SIDEWALK  
CURB BOX IS 4.3 FT EAST OF THE  
PLASTIC METER PIT OR .9 FT EAST  
OF THE CURB.

DOMESTIC ✓

HOLLY    

MAIN    

SERVICE    

July 23 - 2 PM - U.L.

HYDRANT

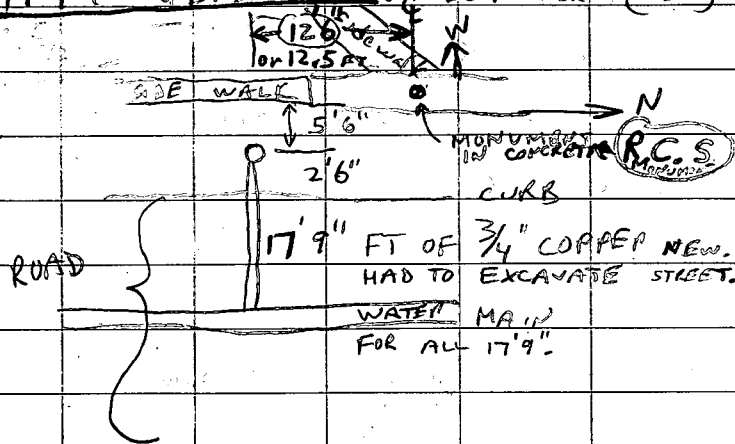
CONTRACTOR Brown Phillip F.B. # 501-78

INSPECTOR John Lynch DATE 7-23-91

RECORDED John Lynch MISC.    

POSTED TO 400 G.B.     H.B.     V.R.    

1179 GENESSEE ST. SERVICE (WEST)



STREET

LOCATION

DESCRIPTION

DOMESTIC

HOLLY

MAIN

SERVICE

HYDRANT

1181 Genesee St

Curb Box is 18x50 = 68' South

of sidewalk monument. This is confusing  
as it is approx 21.5 FT NORTH  
OF NORTH WALL OF THE HOUSE. The 68'  
FALLS EVEN WITH THE SIDEWALK STEPS (#1177)

Wednesday July 24 - 10AM

Bored under the street to  
tie into the main. 16.5 FT  
OF 3/4" NEW COPPER installed to  
NEW CURB BOX ALSO

INSTALLED NEW CURB BOX & VALVE.  
AND 2 FT OF COPPER ON HOUSE  
SIDE OF CURB BOX. SIDEWALK  
60" X 64" REMOVED FOR STREET BORE.

1181 CURB BOX;

21.5 FT NORTH OF NORTH WALL  
OF HOUSE

13 FT EAST OF W PL OF  
GENESEE ST.

CONTINUED BY BRIAN PHILLIP F.B. # 501-79

INSPECTOR

Wednesday, DATE 7-25-91

RECORDER

John Langdon MISC.

POSTED 40

400

G.B.

H.B.

V.R.

Wednesday July 24-1991 (1187-1185)

1187-1185 Genesee Street Staked today

STREET PIT SIZE 2 1/2 FT x 8 1/2 FT

CORE BORE TO MAIN & REMOVED  
1 SQUARE 60" x 64" SIDEWALK

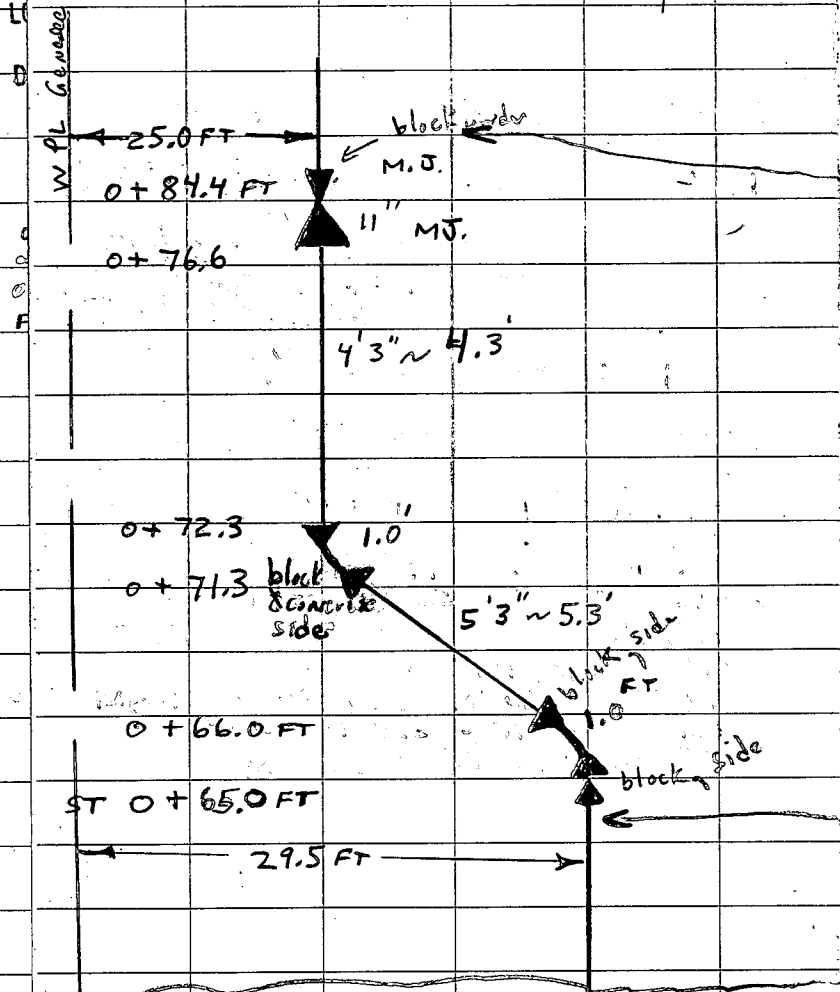
16.5 FT COPPER 3/4"

FROM MAIN TO CURB BOX INSTALLED  
NEW CURB BOX & VALVE.  
HOUSE IS A DOUBLE

CURB BOX: 12' EAST OF  
W PL OF GENESEE ST AND  
4.5 FT SOUTH OF NORTH FACE  
OF 1185-1187 HOUSE.

INSPECTION WED. JULY 24-91 11AM  
CURB BOX ALSO 2-3 FT WEST  
OF WEST CURB Genesee St.

Genesee St 12" NEW TO EXIST. N  
 10" tie IN. This is in front  
 of H.N. 1157 Genesee Street.  
 ↑ NORTH



ACTUAL 16'0" x 7'9" HOLE EXCAVATION  
 FOR ABOVE. THIS  
 UNCOVERED 4 FT OF  
 THE OLD 10" MAIN  
 ON THE NORTH END  
 OF THE P.T.

BRIAN PHILLIPS  
 Wednesday  
 John Lungden

501-80  
 7-24-1991

29.5,  
 65'-0

10" EXISTING MAIN (MJ TO INCREASER)  
 10" TO 12" INCREASER (MJ + MJ)  
 (11" LONG FOR INCREASER ~ .8 FT)

4'3" LENGTH OF 12" DIP (MJ, MJ)

12" - 45° TRIM TYPE (MJ, MJ)

5'3" OF 12" DIP (MJ, MJ)

12" - 45° TRIM TYPE (M.J., MJ)

NEW 12" DIP STATION MEASURED  
 65.0' NORTH OF NPL OF WELDON,  
 Existing 10"

STREET CUT IS  
 2'6" WIDE AND  
 IS 3.0' TO CENTER  
 OF THE ROAD.  
 2'6" → F=3.0'

